









User's Manual

FaceFilter Studio²

Revitalize the beauty of your photos

FaceFilter Studio 2 Manual

Content

FaceFilter Studio 2 Manual	2
Content	2
Introduction	4
Installing FaceFilter Studio 2.....	5
What's New	10
Smart Portrait.....	10
Red-Eye Reduction	13
Print Expression.....	16
Print.....	18
Starting FaceFilter Studio 2.....	19
 1- Selecting an image	20
 2 - Fitting the facial mask	25
 3 - Enhancing the skin	31
 4 - Selecting an expression	36
 5 - Printing the image	45
 6 - Exporting the image	48
Hints and tips	51

Keyboard shortcuts.....	57
Frequently asked questions.....	62

Introduction

Welcome to **FaceFilter Studio 2**, a handy tool to add and modify the emotions and features of the faces in your graphics. **FaceFilter Studio 2** is a very simple yet powerful application that allows you to change the facial features in digital images in such a way as to make them more attractive and beautiful. With **FaceFilter Studio 2**, you can edit a face so as to have a balanced structure, better eyes or nose, a sexier mouth, or an attractive smile. You can smooth out wrinkles, and remove pimples or other unwanted skin blemishes. You can de-gloss an image to remove excessively shiny features due to strong flash. You can also add tone and color to your skin to obtain a desired skin effect or even a complete makeover.

Are you tired of the red-eye phenomenon happening in the images once in a while? **FaceFilter Studio 2** will remove them with just one click. The faces in the image are too dark for you? With **FaceFilter Studio 2**, it will be easily fixed and the faces look energetic and brighter again!

You can even add a completely different expression to your face using the muscle adjustment tool provided. You can achieve a younger or slimmer look, and convey a smart and confident impression to the viewer with your picture. With this tool, you can transfer an average quality photograph into a beautiful portrait by using digital cosmetics and expressions.

Furthermore, you can even print out images with different expression templates applied to share with your family or friends. Moreover, you can print out all the edited images with your color printer. You don't have to wait for a couple of days for the pictures. You can have them instantly after you have finished editing them.

This software application provides you with face editing capabilities in a very simple and speedy fashion. The user interface is easy and intuitive to learn, and the editing can be done by following a sequential flow in the software. The skin filters enable you to edit the facial skin in your images and remove red eye effects. A large template gallery provides various expressions that you can apply to your image. Multiple faces in the same image can also be edited with the same software. The more advanced user can take advantage of manual adjustments to achieve the desired results. Printing the faces with expressions makes taking pictures much more fun!!

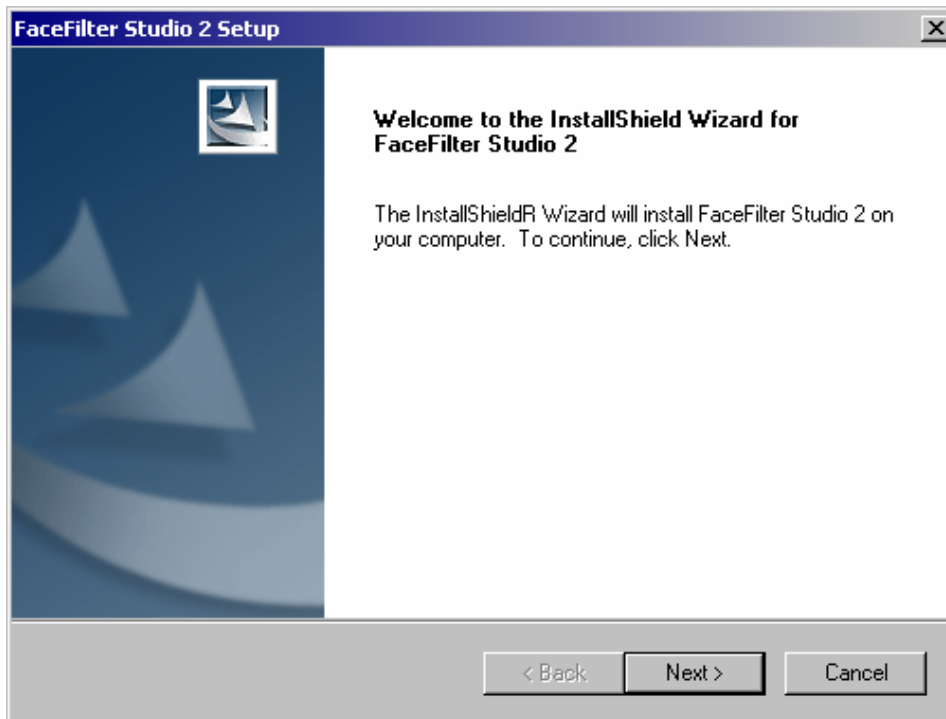
Now, let's enjoy the whole new **FaceFilter Studio 2**!

Installing FaceFilter Studio 2

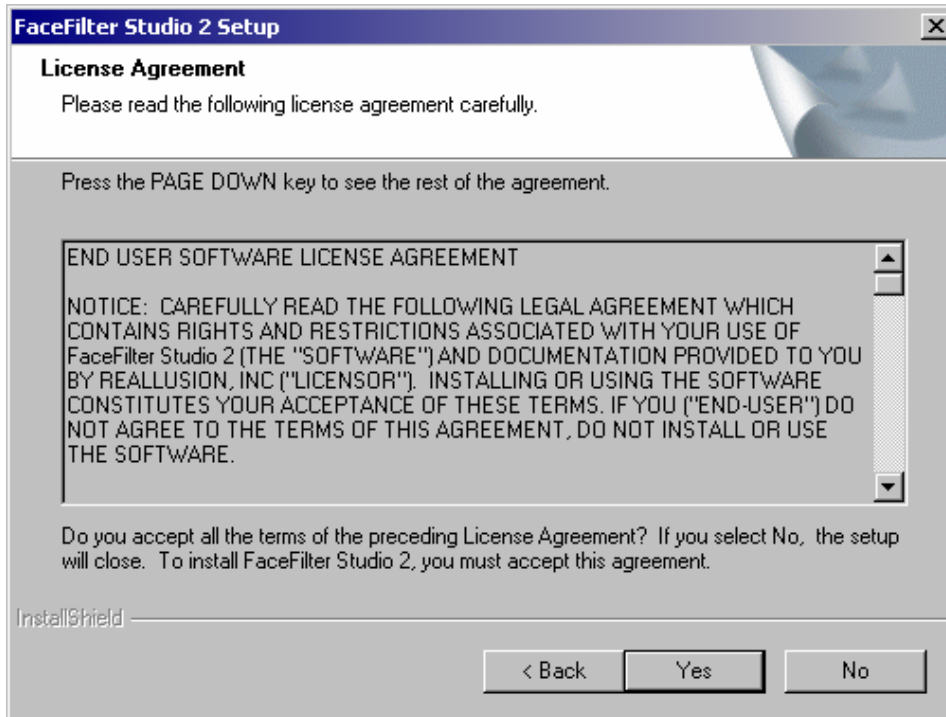
1. Insert the **FaceFilter Studio 2** disc to your CD/DVD Rom Driver. Select **"Installing FaceFilter Studio 2"** when the installation menu shows.

Note: If the installing wizard fails to run automatically, select **Start (left-bottom corner of Windows), Run**, type "D:\Autirun.exe" in the edit box and click OK button. (It is presumed that your CD/DVD Rom Driver locates as D:\)

2. Click **Next** in the dialog box to go to next step.



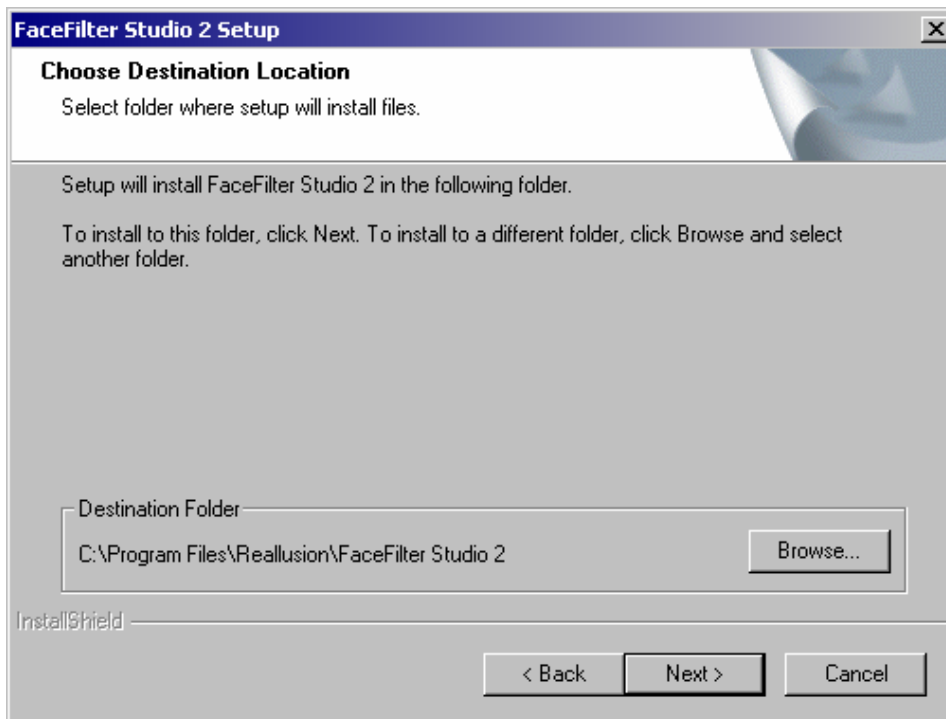
3. If you accept the agreement in this step, please click **Yes** for accessing the next step.



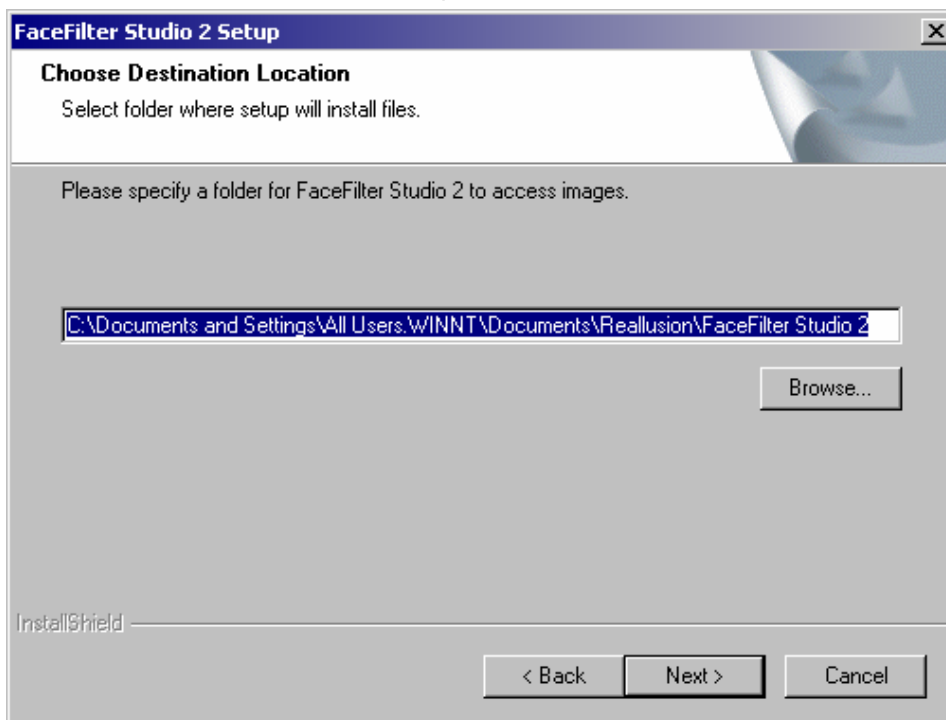
4. Type in your **User Name**, **Company Name**, **E-Mail**, product **Serial Number** and click **Next**.

The screenshot shows the 'FaceFilter Studio 2 Setup' window with the 'Customer Information' tab selected. The window has a title bar with the text 'FaceFilter Studio 2 Setup' and a close button. Below the title bar, the text 'Customer Information' is displayed, followed by 'Please enter your information.' and 'Please enter your name, the name of the company for which you work, the email that you will use for product registration and the product serial number.' Below this, a statement reads: 'All information is kept confidential, Reallusion does not sell, trade or exchange lists with any other organization.' There are four input fields: 'User Name:' with the text 'John Doe', 'Company Name:' with the text 'ABC Inc.', 'E-Mail:' with the text 'john_doe@abc.com', and 'Serial Number:' with a placeholder text 'XXXXXXXXXXXXXXXXXXXX'. At the bottom, there are three buttons: '< Back', 'Next >', and 'Cancel'. The 'Next >' button is highlighted. The 'InstallShield' logo is visible in the bottom left corner.

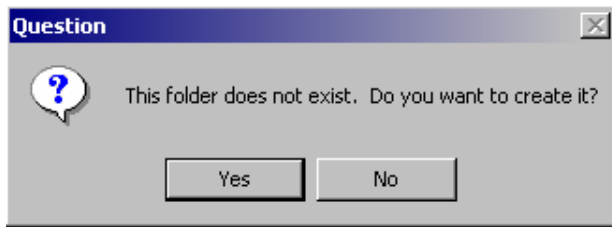
5. Click **Next** and the wizard will install program into the default directory, or you may click **Browse** to select another install directory.



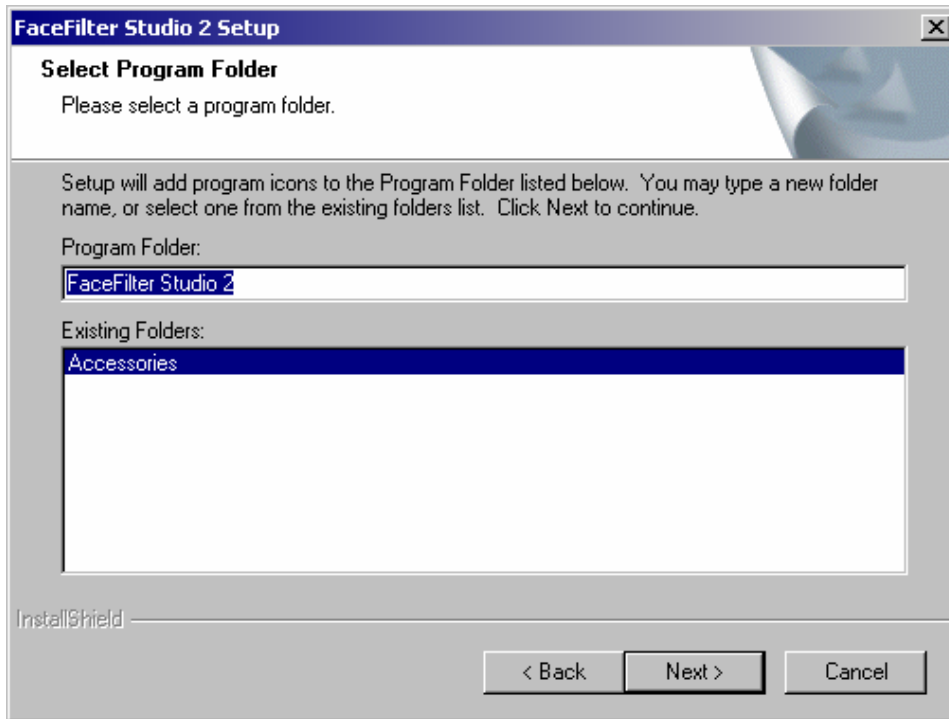
6. Click **Next** to have the sample photos copied into the default directory, or you may click **Browse** to select another directory.



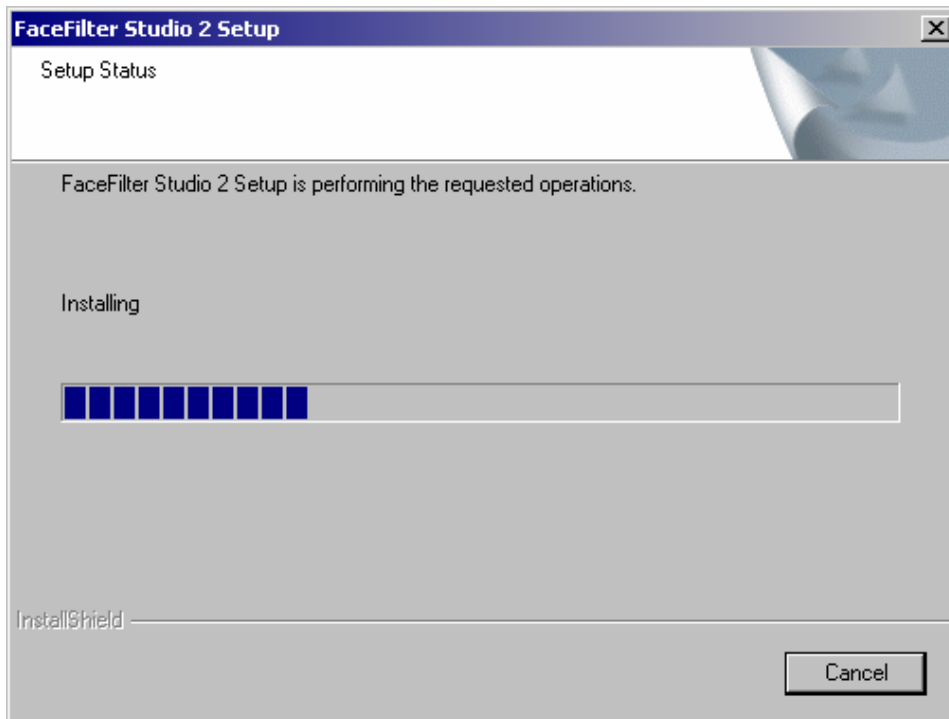
7. Click **Yes** if you want to create the directory and go to next step.



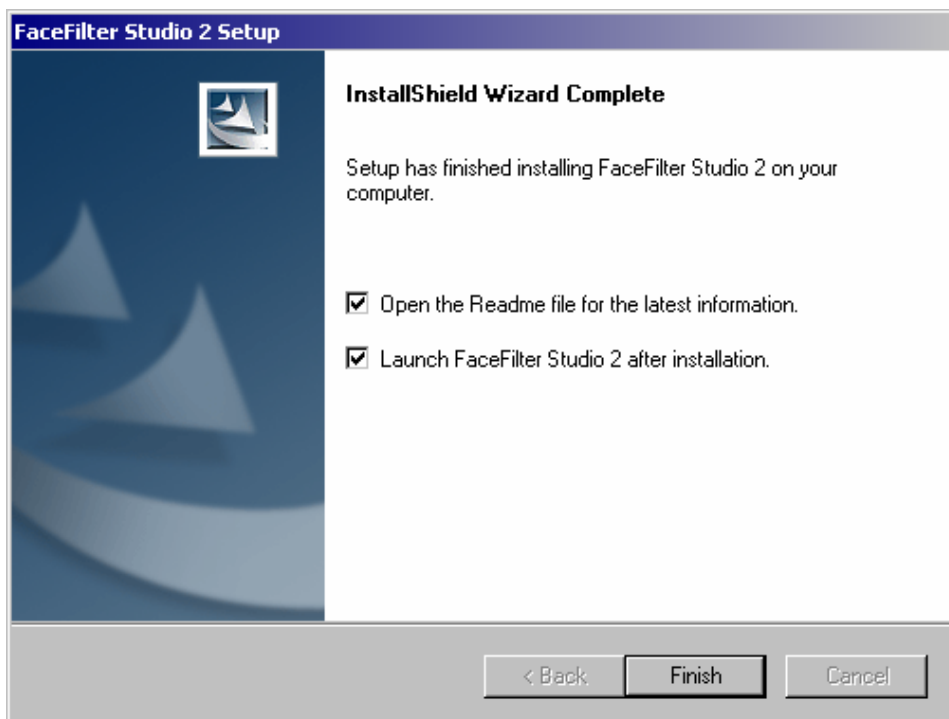
8. Confirm the name of the **Program Folder** and click **Next** to start installing



9. The wizard will start to install the program.




10. Click **Finish** to finish the installing wizard.

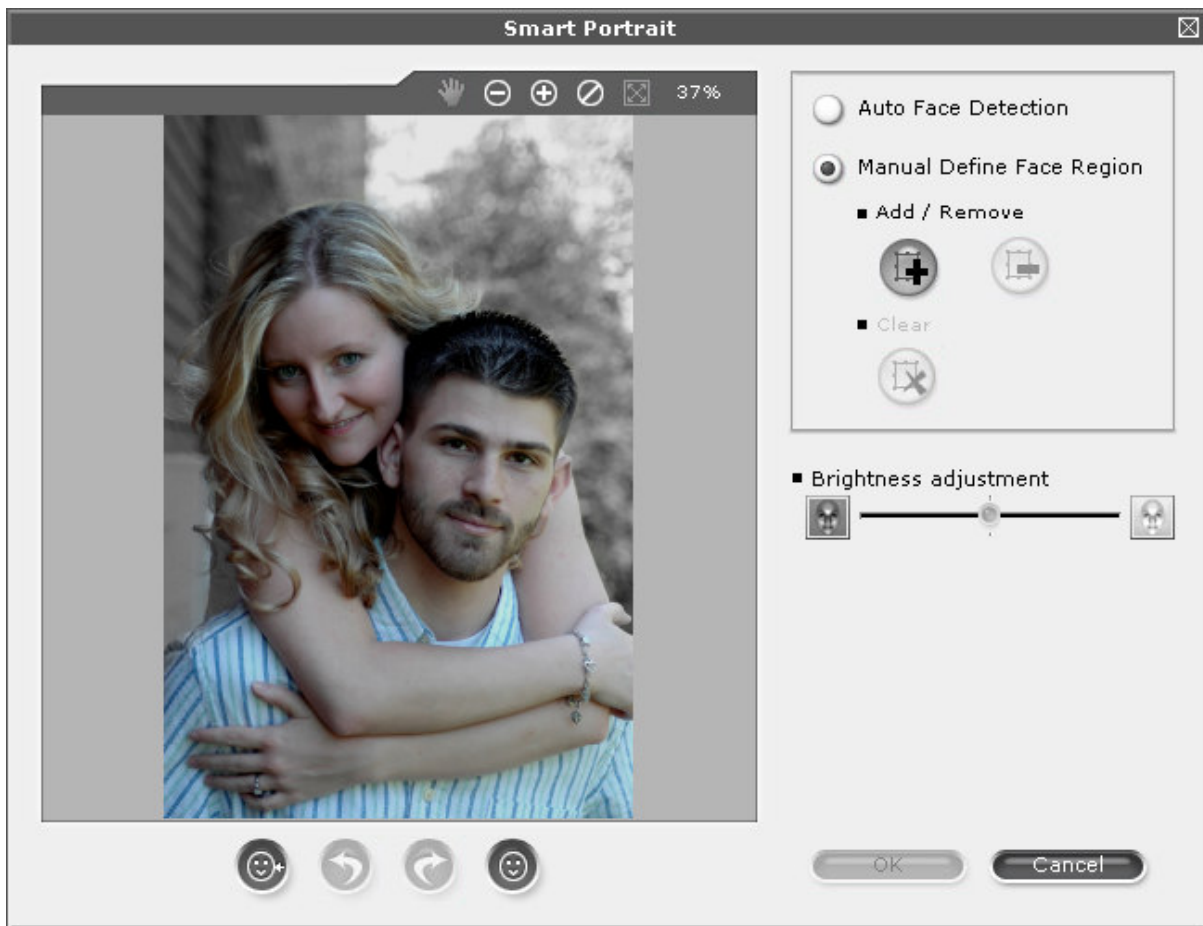


What's New

Smart Portrait

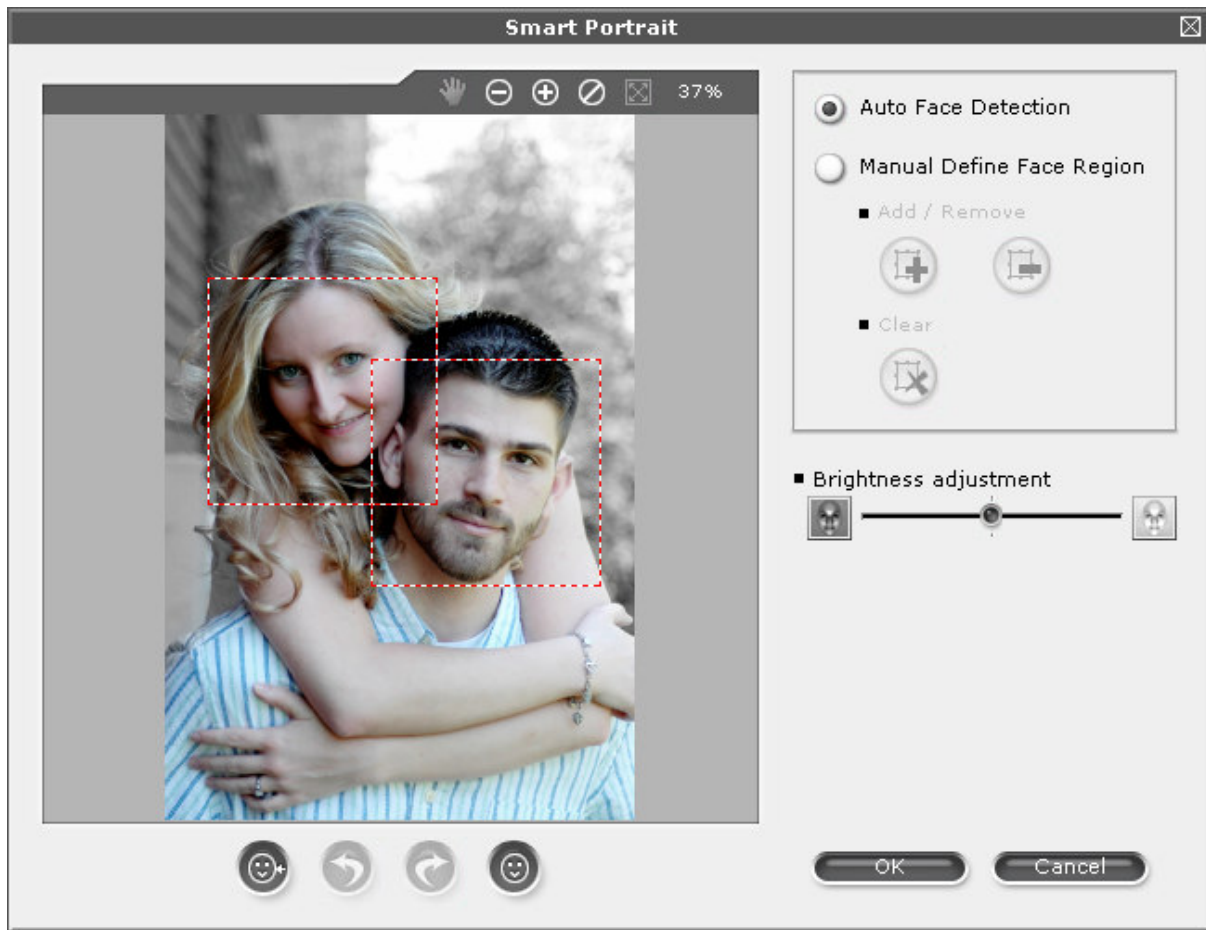
The faces in the photographs can be over-exposed or over-darkened from time to time due to incorrect flash settings or light conditions. This can be optimized by using the **Smart Portrait** function.

Click the  button to use this tool as follows: (The image is dark originally before the adjustment through this function)





1. To modify the faces automatically, check **Auto Face Detection** radio button.


2. The system detects all the faces in the image and marks them as dotted boxes shown in the figure.



3. To modify the faces manually or when the system fails to detect the faces automatically, check **Manual Define Face Region** radio button.

4. Under **Add/Remove**, click the  button to add the face area. Drag square regions around the faces in the image for enhancing the brightness of them.

5. Click the  button. Click on one of the regions in the image to remove it so the marked face will be unmarked. (Note: Since the marks don't apply the concept of layer, multiple marks can be removed at the same time with only one click on the overlapped parts)


6. Click the  button to remove all the regions in the image.

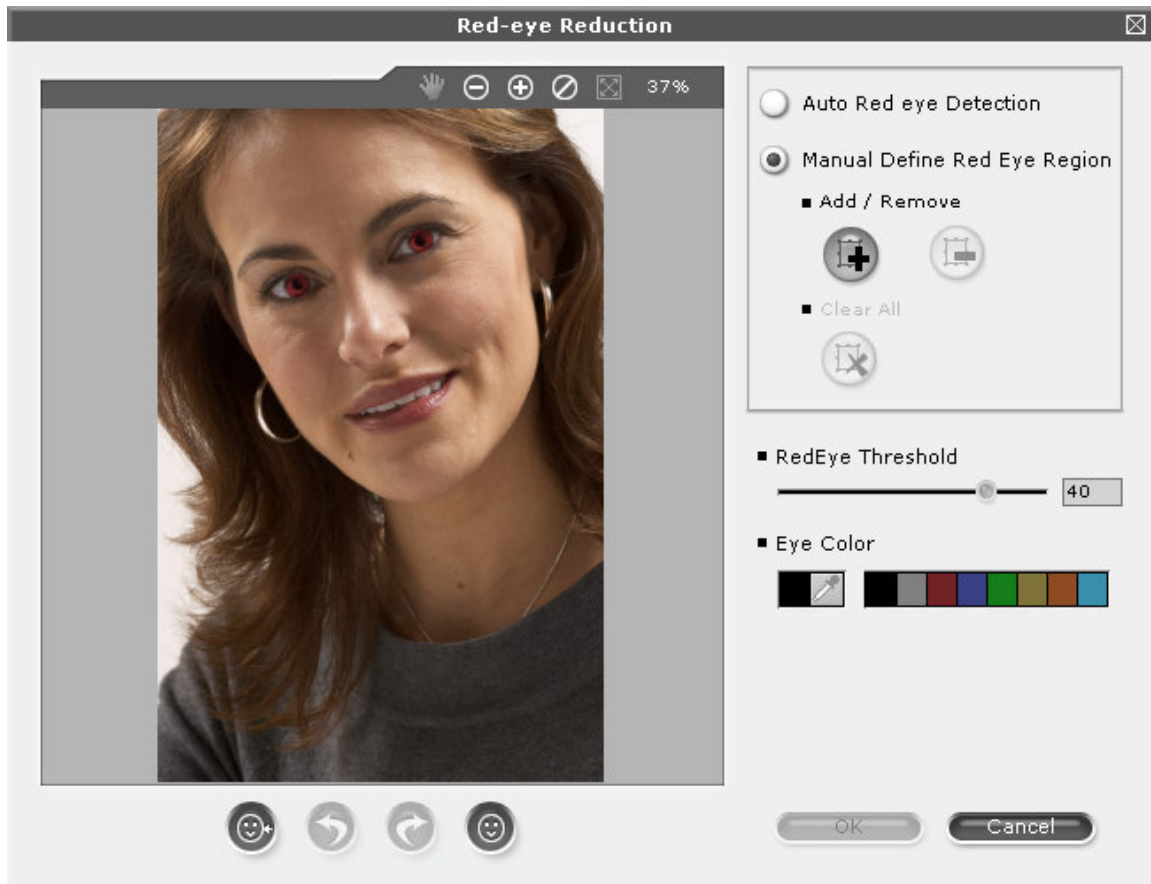
7. By dragging the **Brightness adjustment** slider, the entire image changes its brightness to reflect the new threshold setting. Release the mouse when you are satisfied with the change.

8. Click **Ok** button to accept the adjustment and leave the dialog box or **cancel** button to discard all changes.

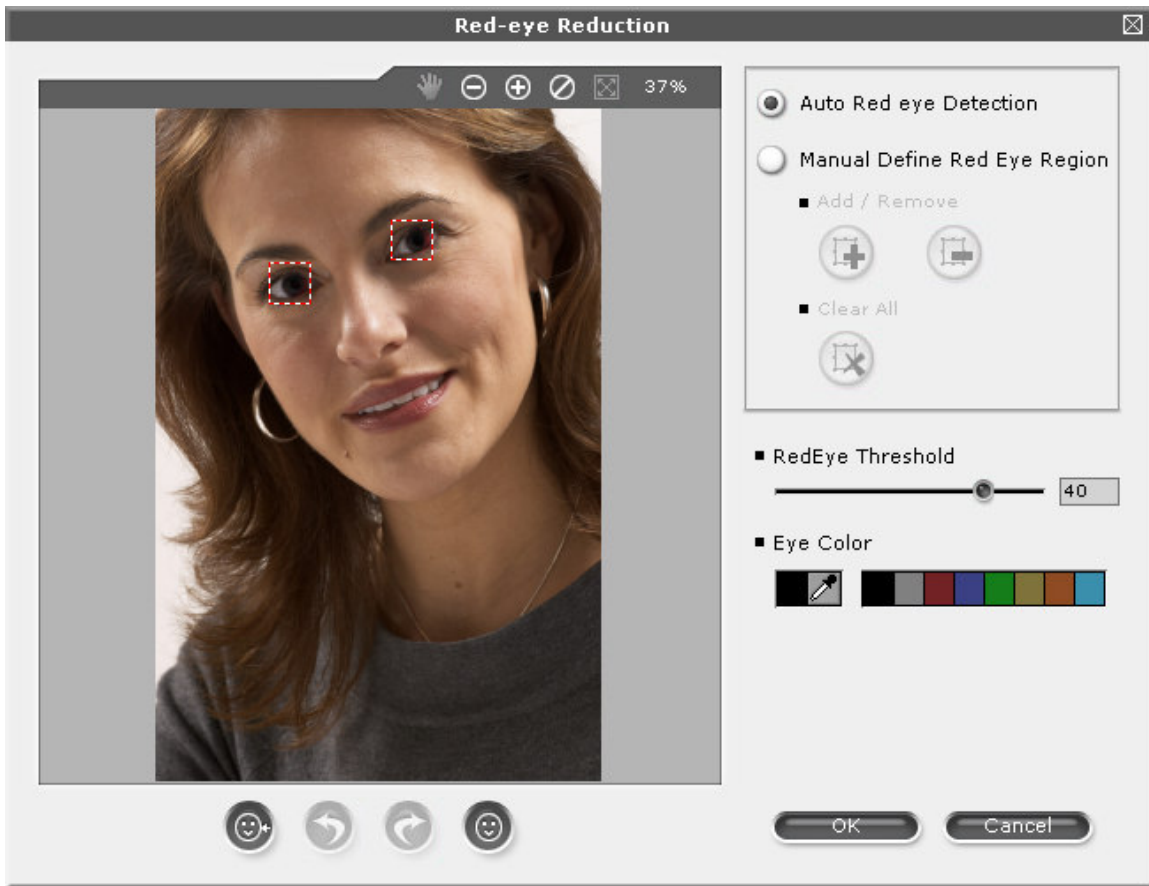
Red-Eye Reduction

Red eye is a very common phenomenon in photographs due to incorrect flash settings or light conditions. This can be reduced by using the **Red-eye Reduction** function.

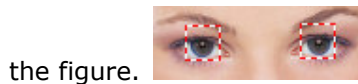
Click the  button to use this tool as follows:



1. To modify red eyes automatically, check **Auto Red Eye Detection** radio button.





2. The system detects all the red eyes in the image and marks them as dotted boxes shown in




the figure.

3. To modify red eyes manually or if the system fails to detect the red eyes automatically, check **Manual Define Red Eye Region** radio button.

4. Under **Add/Remove**, click the  button to add the red eye area. Drag square regions around the red eyes or any eyes in the image for changing color.

5. Click the  button and then click on one of the regions in the image to remove the region; so the marked eyes will be unmarked. (Note: Since the marks don't apply the concept of layer, multiple marks can be removed at the same time with only one click on the overlapped parts)

6. Click the  button to remove all the regions in the image.

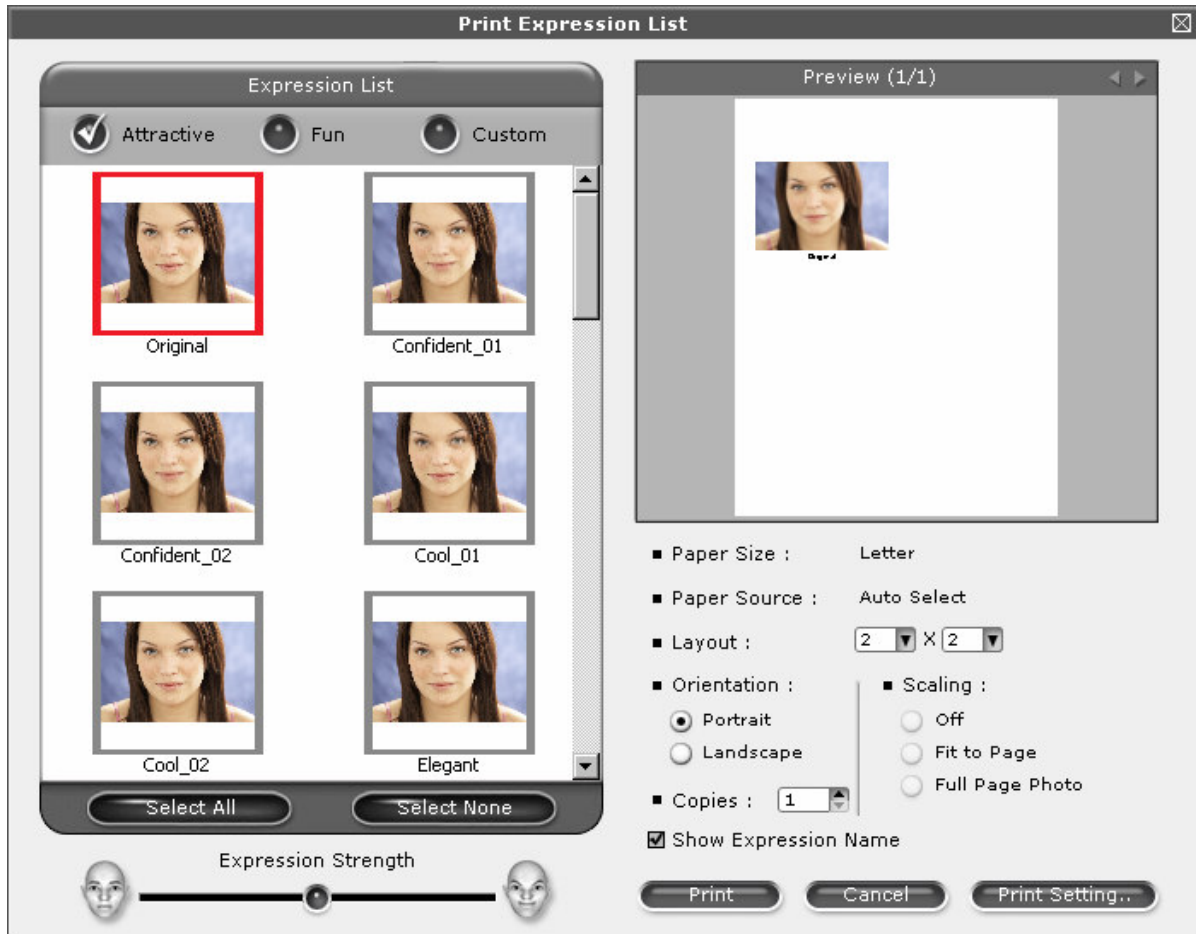
7. By dragging the **RedEye Threshold** slider, the marked eyes change their range and color to reflect the new threshold setting.
8. Use the color palette under **Eye Color** to select a color for replacing the red color of the eye in the image. View more colors by clicking the boxes at the right side of the eyedropper. You can also add a custom color to the palette by clicking the box at the left side next to the eyedropper and choosing a color from the color spectrum. Alternatively, you can use the eyedropper  to sample a color in the image and use it as the eye color.
9. Click **Ok** button to accept the adjustment and leave the dialog box or **cancel** button to discard all changes.

Print Expression



This new feature is embedded in the Select Expression step. You may click



to use this tool as shown below:






The menu consists of a number of options, which allow you to select different expressions, set the settings of the printer, and preview the result and print out onto the page.


- Click on the expression templates in the gallery for printing. The one you clicked is marked with a red box around the template. You may click the  (Ctrl + A) to select all the templates in the gallery or  (Ctrl + N) to deselect all the templates you have selected.
- Drag the Expression Strength to change the overall strength of the templates in the three categories.

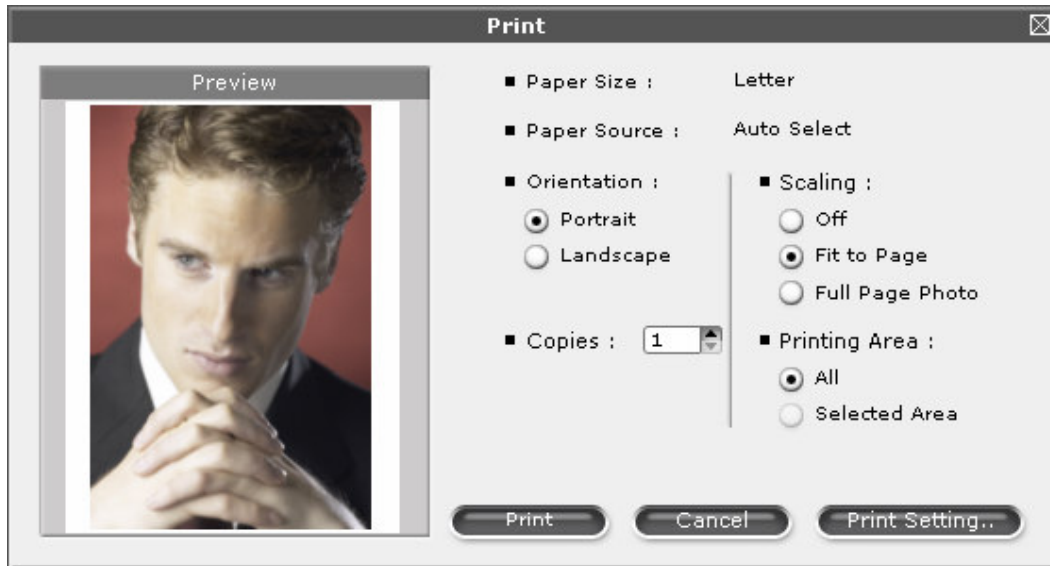
- Change the **Layout** setting under the preview pane. The setting can be set up to **6x6** so you may print 36 images of different expressions in one page. Here is the rule for the layout:



- Check the **Show Expression Name** check box to have the names of the templates printed on the page. Check it off if you do not want them to be printed.
- There are two buttons  on the top-right corner of the preview pane. Click them to see the status in different pages when there are multiple ones.
- Click  to print via your printer according to the settings you adjusted. All the settings remain whenever you access this tool until the application is closed. Click  to close this tool and discard any settings.

Print

Click  to invoke the print image tool as follows:



1. **Paper Size** shows the paper size according to the paper setting in your printer.
2. **Paper Source** shows the paper source that your printer supports.
3. Under **Orientation**, check **Portrait** or **Landscape** to print vertically or horizontally on the page.
4. Under **Copies**, click the up/down arrow to decide how many pages are to be printed.
5. Under **Scaling** check **Off**/**Fit to Page**/**Full Page Photo** to print different look of the image on the page.
6. Under **Printing Area**, check **All** to print the whole image while check the **Selected Area** to print the cropped area. (Note: The **Selected Area** button is disabled if no cropped area is made)

Starting FaceFilter Studio 2

After you install FaceFilter Studio 2 on your computer, an application icon is placed on the desktop and in the Start menu.


To start FaceFilter Studio 2, do one of the following:

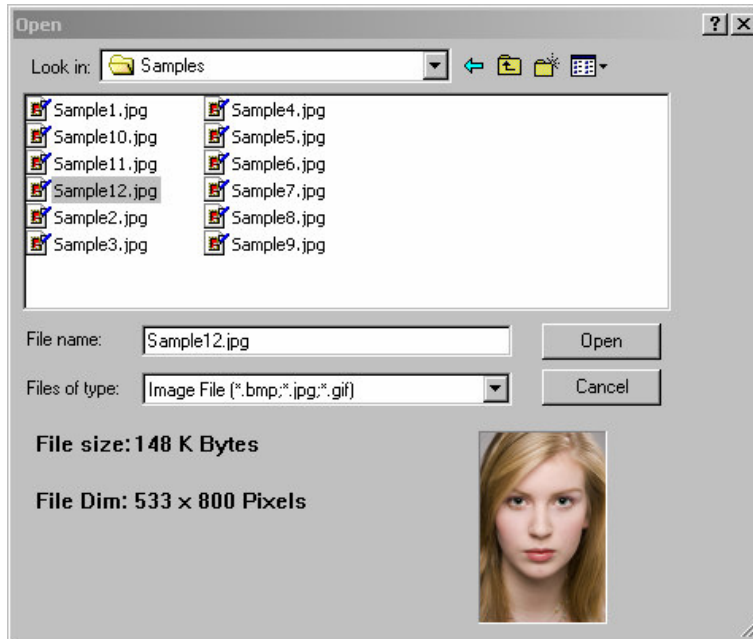
- Double-click the FaceFilter Studio 2 icon on the desktop.
- Click Start | Programs | FaceFilter Studio 2 (folder) | FaceFilter Studio 2. Then click the FaceFilter Studio 2 icon.
- Drag and drop one image (jpeg/gif/bmp) onto the FaceFilter Studio 2 icon to start it.




1- Selecting an image



The Select Image screen enables you to select an image for editing. Follow these instructions to select an image.

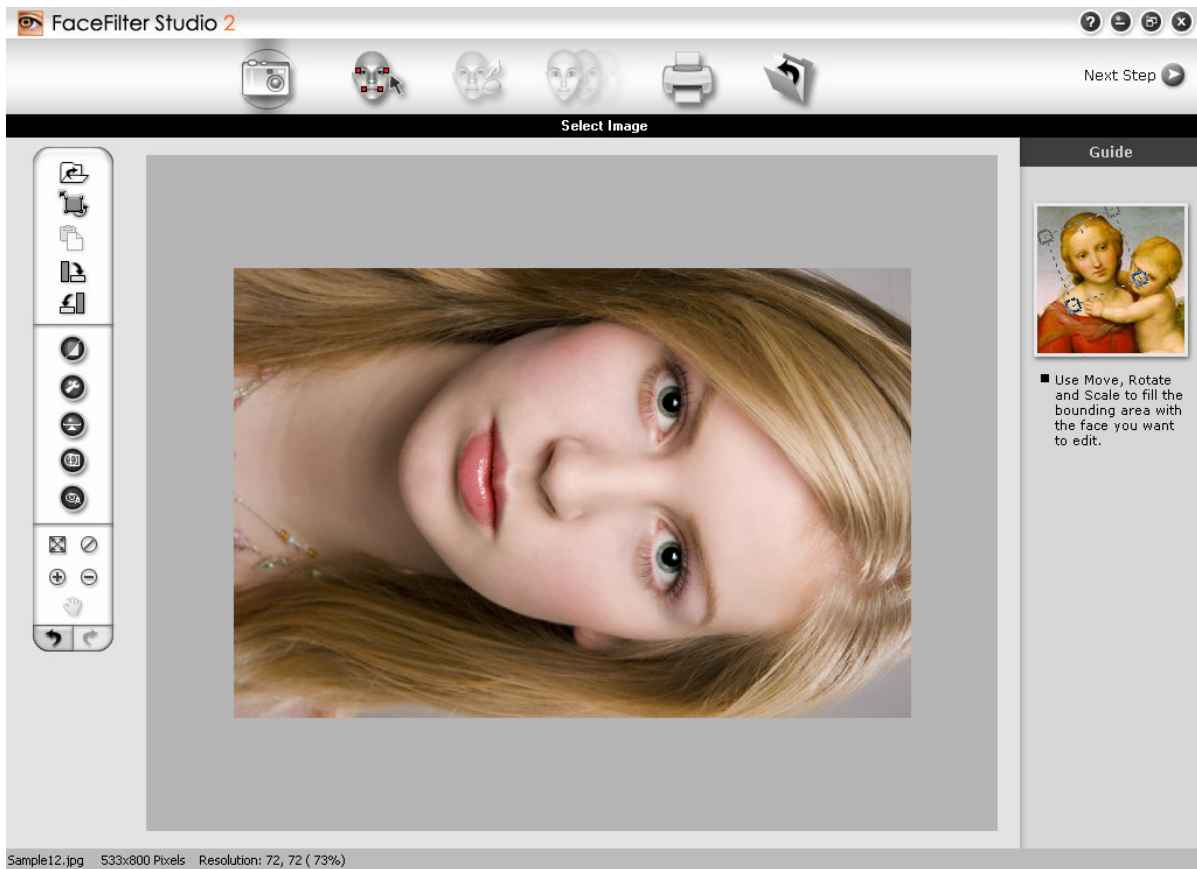
1. Click  to open an image. The Open dialog box appears.




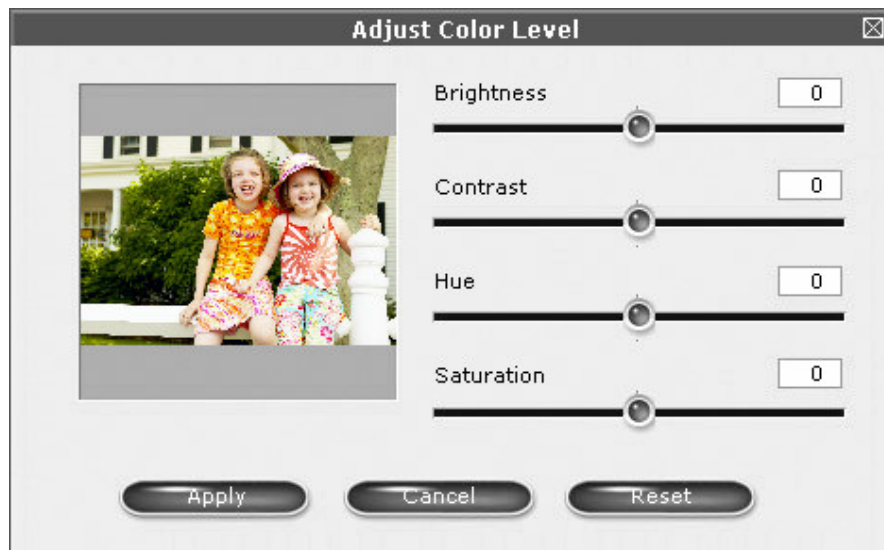
Browse and locate the file that you want to edit. Alternatively, locate the desired image in any **File Manager** application and drag to the FaceFilter Studio 2 window. You can

also use the  button or press **Ctrl+V** on the keyboard to paste an image from the clipboard into the FaceFilter Studio 2 window for editing.


2. Click  or  to rotate the image counterclockwise or clockwise one-quarter turn.





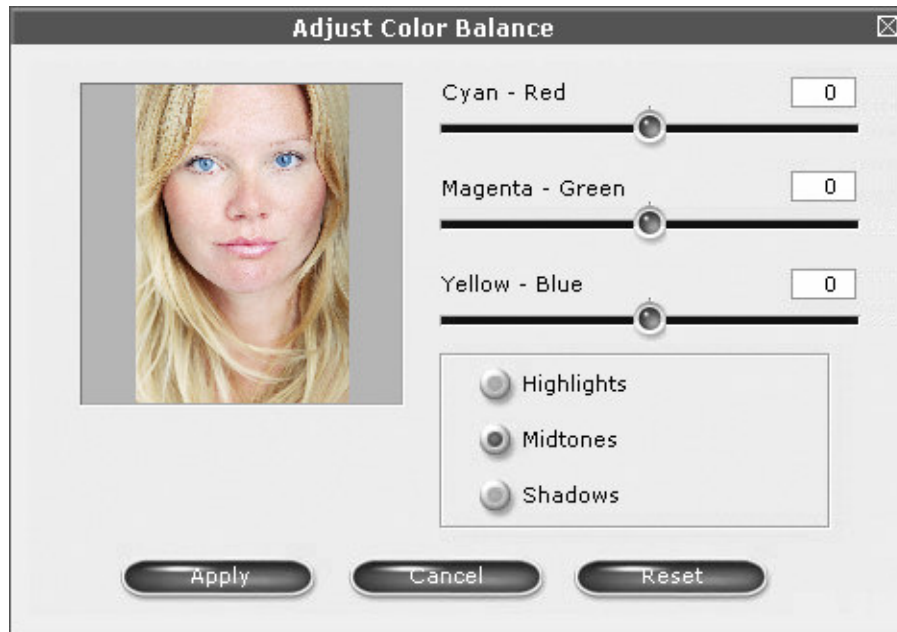
3. Click  to adjust the color levels. The color dialog opens.



Click and drag the sliders to adjust the **Brightness**, **Contrast**, **Hue**, and **Saturation**.


Click  to save the changes to your image.

4. Alternatively, click the  button to adjust the image color levels automatically.
5. Click the  button to modify the color balance settings of the image. The color adjustments dialog opens.

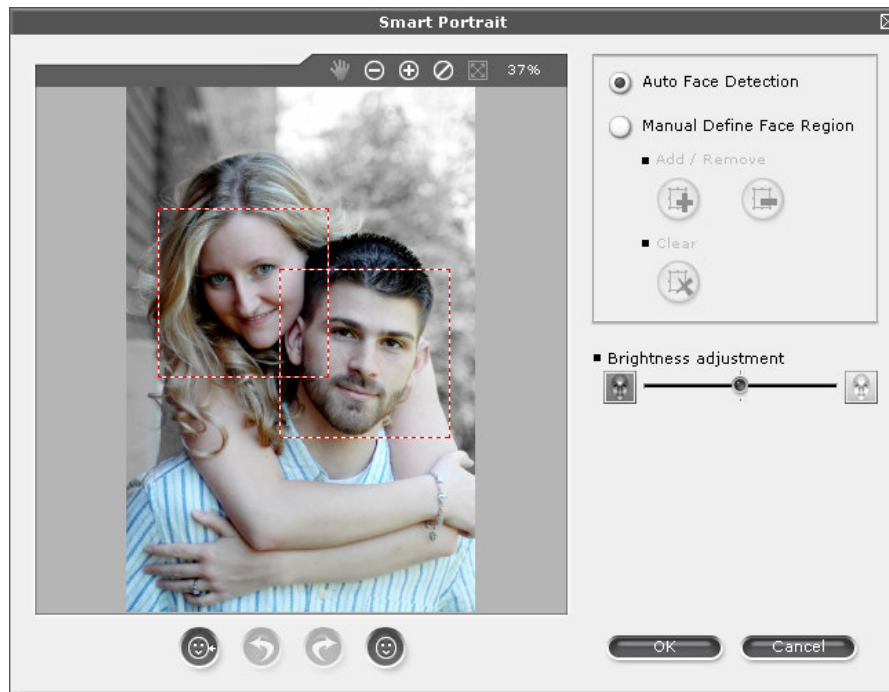



Drag the sliders to adjust the **Cyan - Red**, **Magenta - Green**, and **Yellow -Blue** levels.

The box next to each of the respective properties shows positive or negative values, depending on the position of the slider, centre being zero. Click **Highlights** to apply these color settings to create brighter areas. Click **Midtones** to apply these color settings to the entire image with average intensity. Click **shadows** to apply these color settings to create darker areas in the image. **Apply**, **Cancel** or **Reset** the changes made in the image properties by clicking the corresponding buttons.

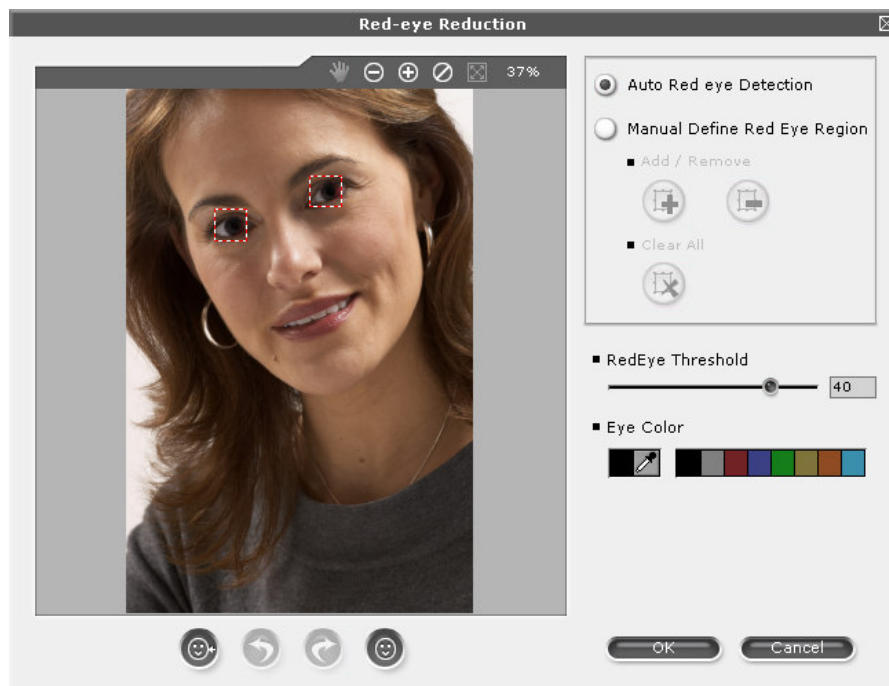
6. Click  to have the program grab faces in the image automatically. The program will adjust the brightness of the whole image so the faces in it look clearer. You may also select faces and adjust the brightness manually by yourself.


(Please refer to the "**What's new-Smart Portrait**" section for more details.)

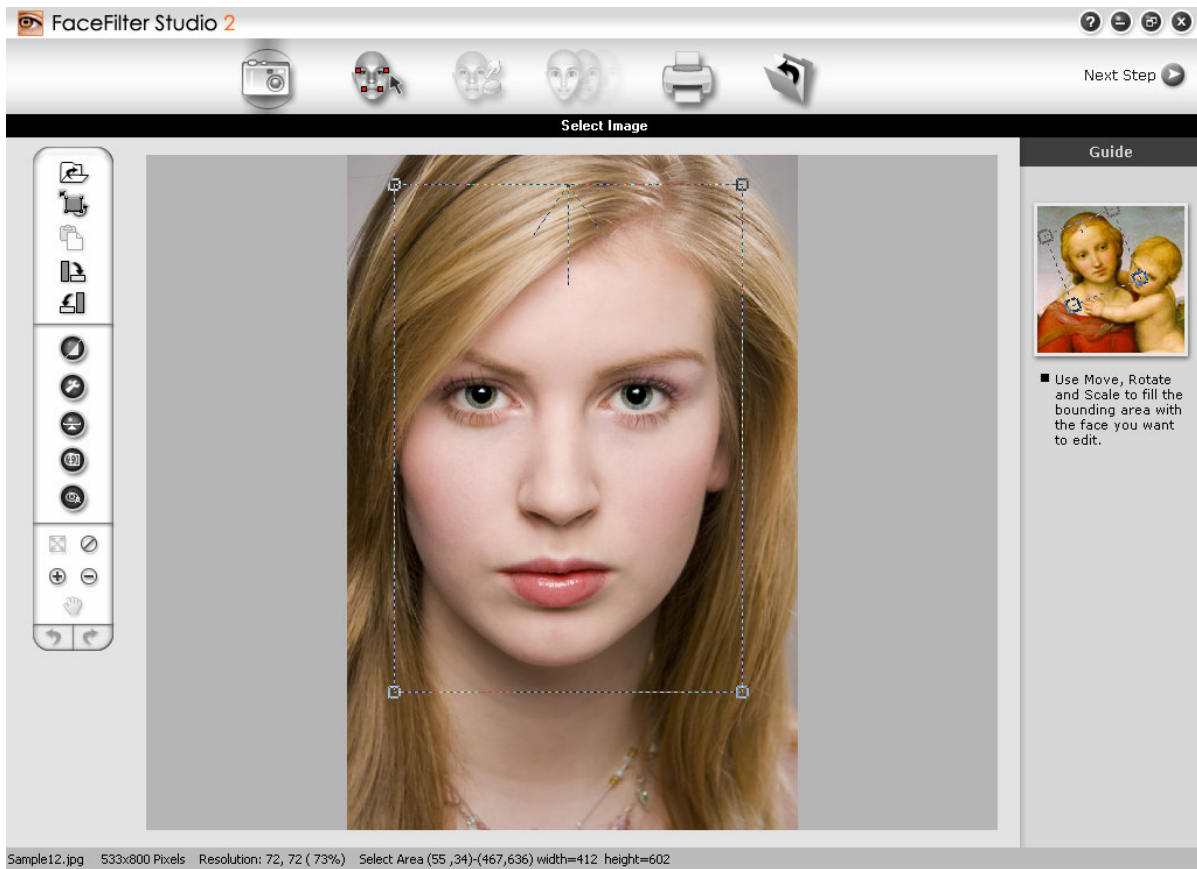



7. Click  to have the program grab red eyes in the image automatically. The program will adjust the color of the red eyes so they look normal instead. You may also select eyes and set the eye color for changing manually by yourself.


(Please refer to the "**What's New – Red-eye Reduction**" section for more details)



8. Click  and click and drag on the image to select the face. Click on a corner of the dotted box and rotate it to align with the face. Click an edge or corner of the box and drag to scale the picture.



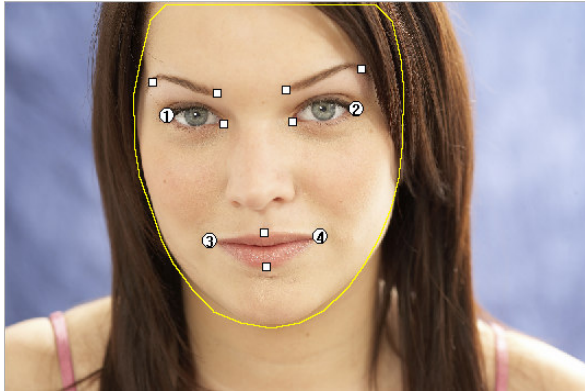
If the face you want to modify is too small or hard to select, click  to zoom in on the image.

Click  to zoom out.

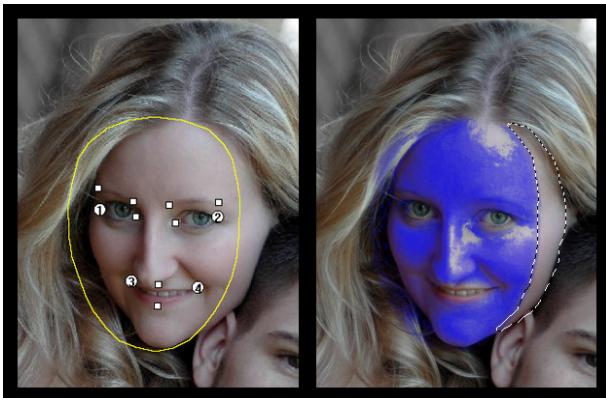


2 - Fitting the facial mask

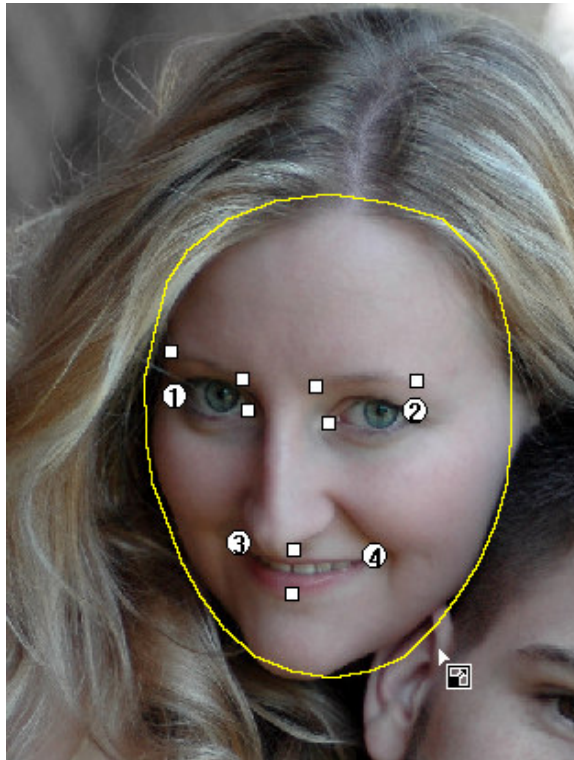
The Facial Mask screen provides an easy guide to fitting the facial mask to your image. Open the Fit Facial Mask screen and follow these instructions.



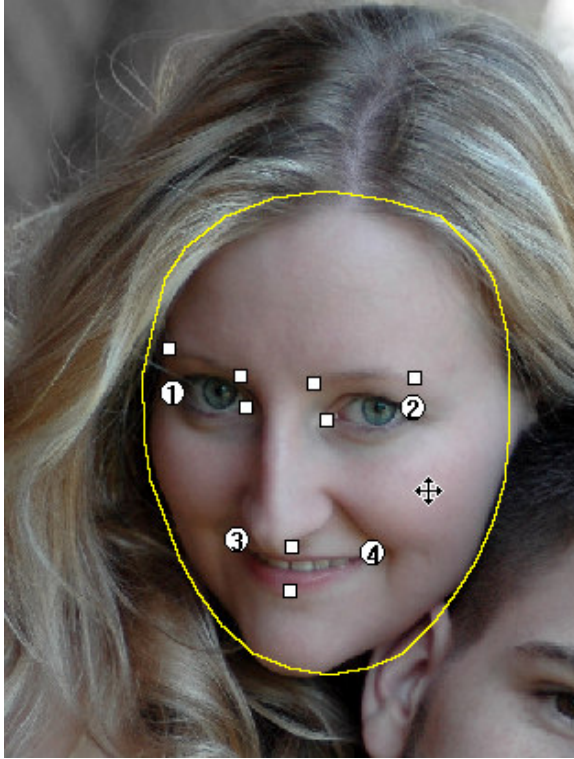
1. Check the **Auto-Fitting** box to fit the facial mask automatically. FaceFilter Studio 2 computes and fits the facial mask and contour for the selected face. The facial mask markers and contour are displayed in the Fitting Window.
2. Click to select the facial mask markers and drag them to place them in the correct position for more accuracy.
3. Drag or resize the facial contour so that it encompasses the entire facial area for application of skin filters. If the facial contour does not completely encompass the facial area, the resulting default facial mask may be incorrect.



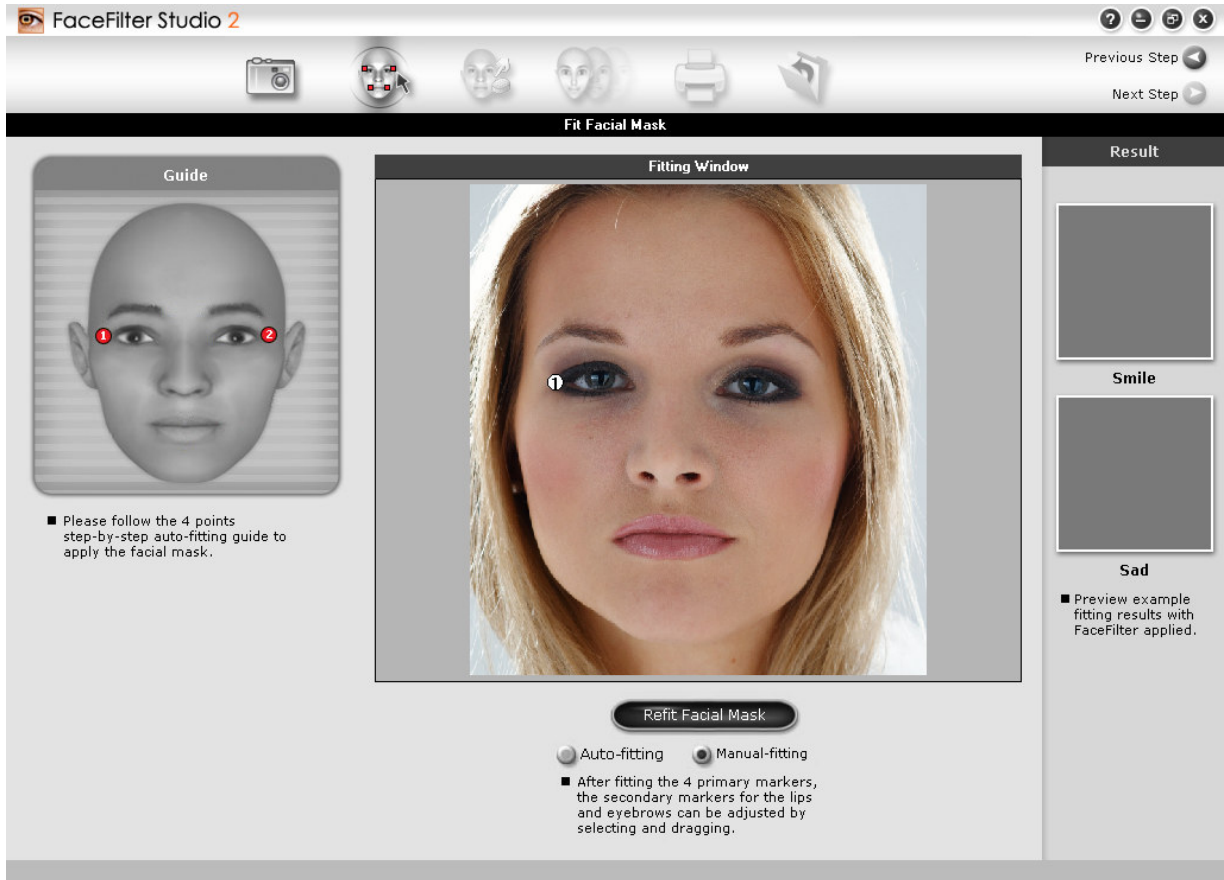
4. To resize the facial contour, hover the mouse on the image outside the contour till the cursor image changes. Click and drag the cursor up and down to decrease or increase the height of the contour respectively. Click and drag the cursor left and right to decrease or increase the width of the contour respectively.



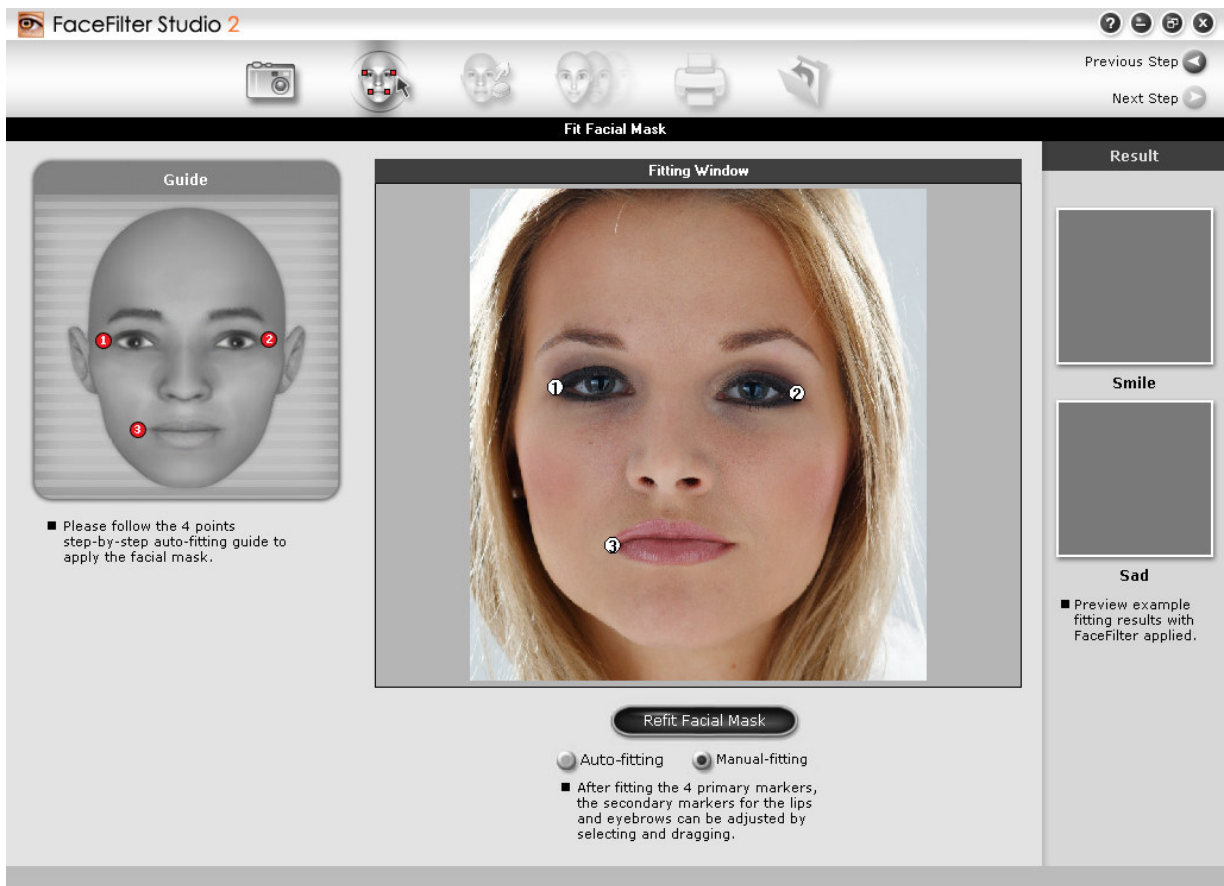
5. To move the facial contour, hover the cursor on the image inside the contour till the cursor image changes. Click and drag the cursor in different directions to change the position of the facial contour.



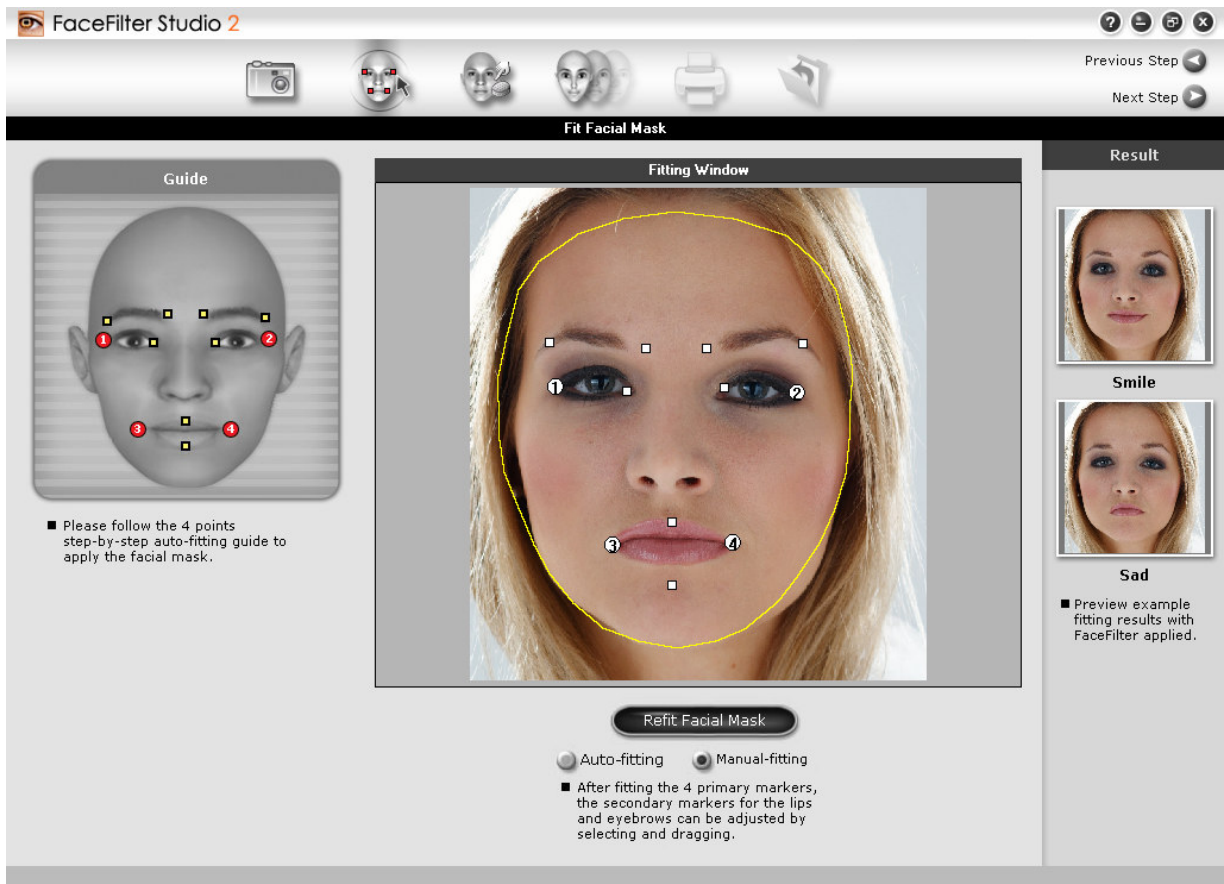
6. Check the **Manual-Fitting** box to fit the facial mask manually.
7. Using the fitting guide on the left, click on your image to insert the first primary marker



8. Continue to click on the image according to the auto-fitting guide to add the remaining three primary markers.
 - Point 1 is located a little outside the left eye.
 - Point 2 is located a little outside the right eye.
 - Point 3 is located a little outside the left mouth corner.
 - Point 4 is located a little outside the right mouth corner.

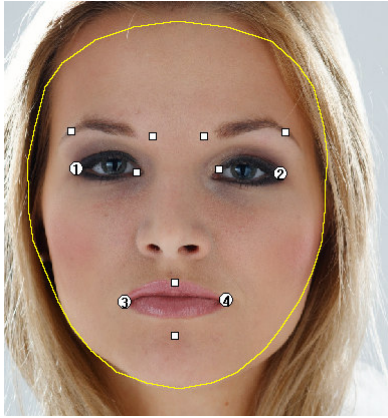


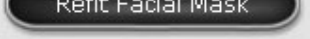
After the fourth marker is added, the secondary markers and the facial contour appear on the image.



In the result pane, the top image shows a preview of the image with a smile filter applied to it; the bottom image shows a sad filter made to the image. These two result images help you add accuracy to the facial mask.

8. Click the white squares or the primary points and drag them to accurately position them on the image, and view the result in the Result pane to judge the accuracy of the placement. Drag or resize the facial contour so that it encompasses the entire facial area for application of skin filters. Check the image sample below with fine-tuned facial contour.



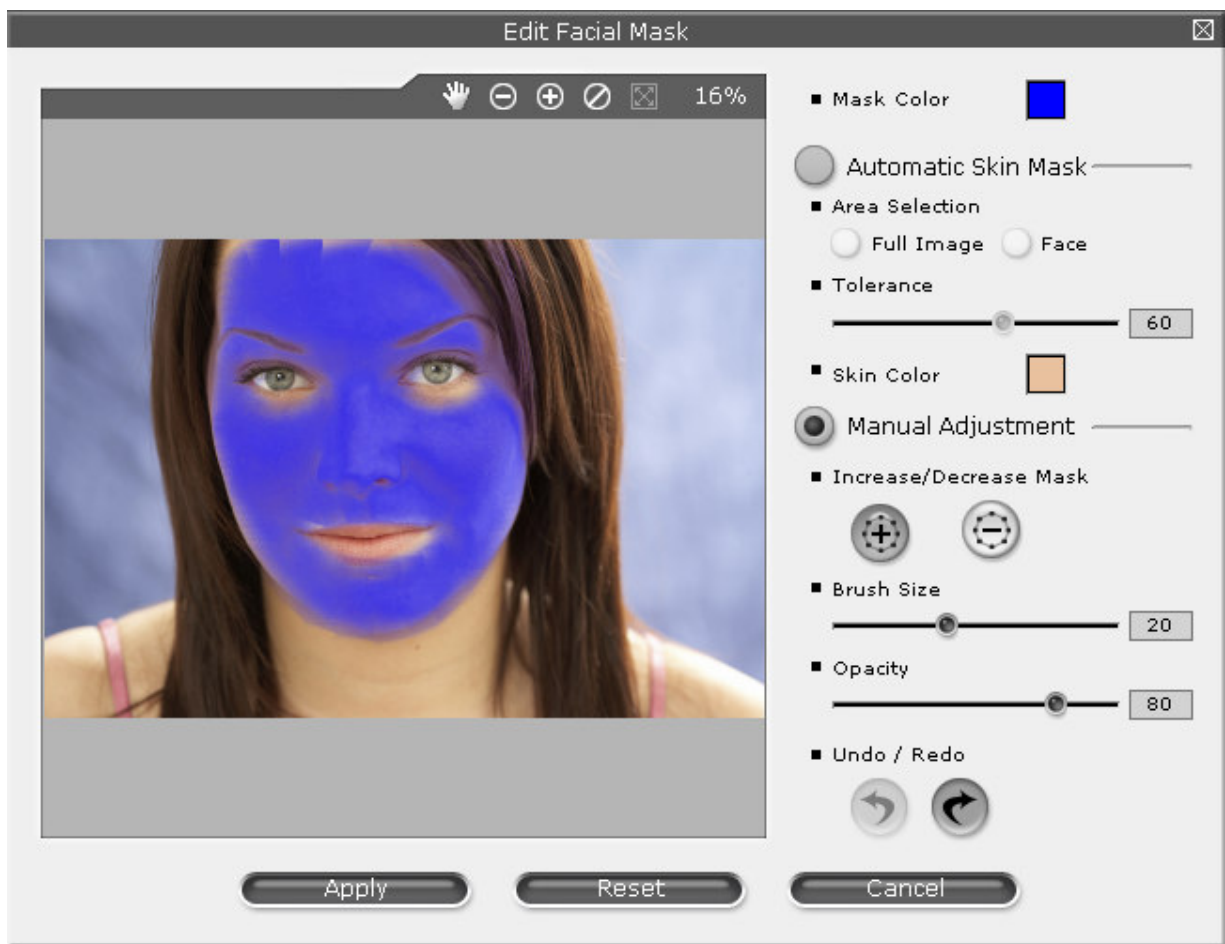
Tip: Click  in the middle of the fitting process to restart from the beginning, in case you are not satisfied with the current facial mask. The previously applied facial mask will be deleted.



3 - Enhancing the skin

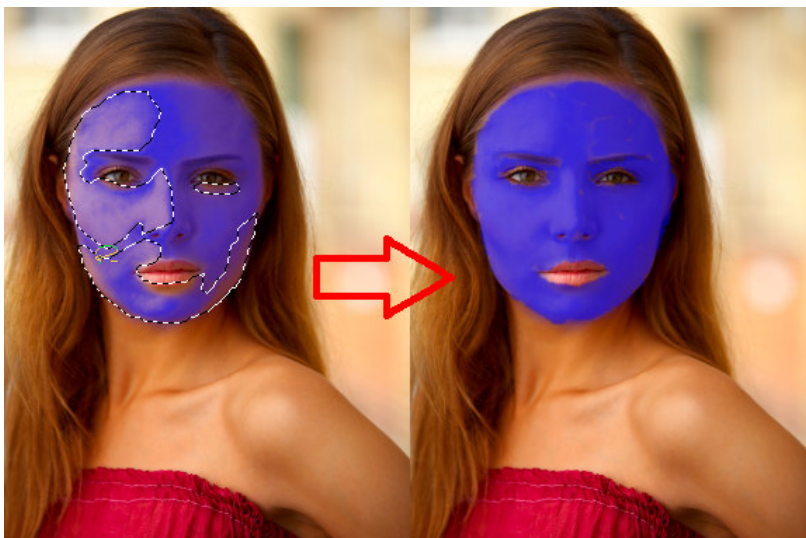
The **Enhance Skin** screen enables you to apply various skin filters and improve the quality of the facial skin. Follow these instructions to perform skin cleaning.

Click  to edit the facial mask.



Click the **Automatic Skin Mask** button to edit the facial mask automatically.



If the automatic skin detection function does not cover the high-contrast areas on the face, manually increase the mask area in order to correctly apply the filtering effects.



Under **Area Selection**, click **Full Image** to allow the facial mask to include the entire image and apply the skin filters to all the skin area in the image. Alternatively, click **Face** to limit the facial mask to be applied only to the face.

Drag the **Tolerance** slider to change the tolerance intensity of the facial mask.

The **Skin Color** box displays the average skin color as calculated by the software from the image. Click the **Manual Edit** button to edit the facial mask manually.

Under **Increase/Decrease Mask**, click the  button to increase the facial mask area or the  button to decrease the facial mask area. Click and drag the cursor over the image to change the facial mask.

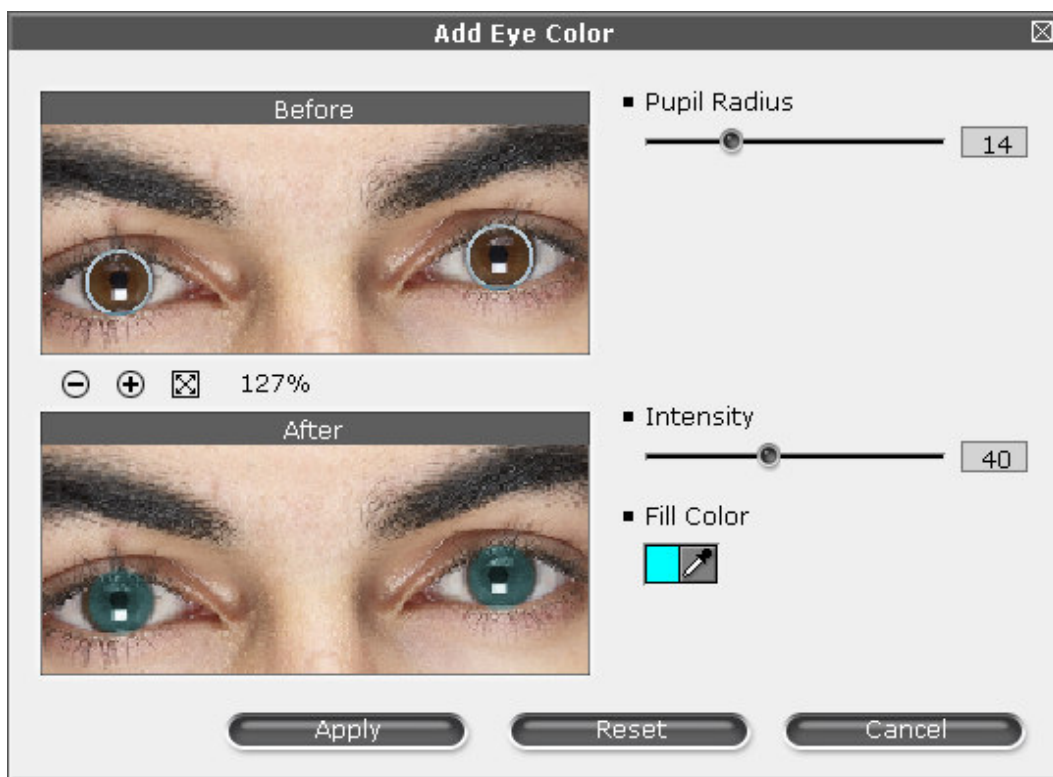
Drag the **Brush Size** slider to change the brush size while modifying the facial mask. Or you can press the key < to decrease the brush size, and press the key > to increase the brush size.

Drag the **Opacity** slider to change the opacity of the brush while modifying the facial mask.

Click the **Mask Color** box to change the color of the facial mask.

Click **Apply** to apply the facial mask and proceed to the next step. Red eye is a very common effect caused in photographs due to incorrect flash settings or light conditions. This effect can be reduced using the red eye reduction tool.

Click the  button to remove red eye effects.




Remove the red eye effect as follows:


Drag the **Pupil Radius** slider to adjust the size of the pupil (black circular opening in the center of the eye). Selecting the correct pupil area prevents erroneous removal of red parts in the image. Drag the circular pupil markers on the image to adjust the position of the pupils.

Drag the **Intensity** slider to specify how much eye color to use when removing the red eye effect and the intensity with which it blends with the original color. Use a higher setting if the red eye

effect is very strong.


Click the **Fill Color** box to select the color that you want to add to the eye pupils. Select the desired color from the color palette displayed. You can also add a custom color to the palette by clicking **Choose Custom Color** and choosing a color from the color spectrum. Alternatively, click the eyedropper  under **Fill Color** and the cursor changes to a dropper when hovered over the image. Click to sample the color from the eye in the image and this will be used to replace the red areas in the original image.


Click **Apply** to remove the red eye effect and proceed to the next step.

Click the  button to apply the following skin filters to the image.



Check the **Smooth Skin** box to apply a skin smoothing filter. Drag the **Smooth Level** slider to change the intensity of the smoothing filter.

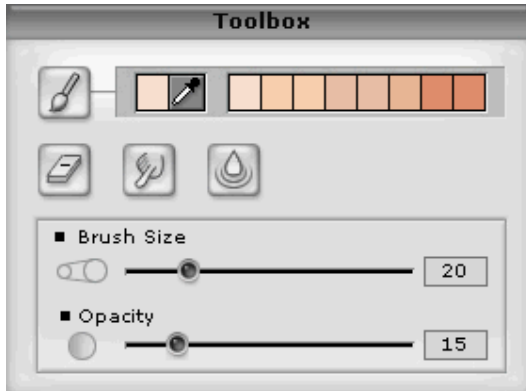
Check the **Shadow/Gloss Reduction** box to remove bright or shadowy areas from the image. Click the **Shadow** button to remove shadows or **Gloss** button to remove excessive gloss. Drag the **Fuzziness** slider to determine the area where the filter is applied. Drag the **Intensity** slider to adjust the strength of the filter. Use the color palette under **Fill Color** to select a fill color to replace the glossy or shadowy areas in the image. Alternatively, you can use the eyedropper  to sample a color in the image and use it as the fill color.

Check the **Adjust Skin Tone** box to apply more color tones to your image. Drag the **Tone Level** slider to change the intensity of the skin tone. Alternatively, you can use the eyedropper  to sample a color in the image and use it as the skin tone color.

Click to apply any one of the 5 skin templates: **Smooth**, **Degloss**, **White**, **Pink**, or **Sun tan**. The **Smooth Skin**, **Shadow/Gloss Reduction**, and **Adjust Skin Tone** filters are adjusted using preset values for each effect.

Click **Apply** to apply the skin filters and proceed to the next step.

Use any of the **Toolbox** tools to apply skin filters manually in desired areas as follows:





Drag the **Brush Size** slider to change the size of the brush used for applying a manual skin effect. Alternatively, you can also press the [,] key to decrease the brush size, or the [.] key to increase the brush size.


Drag the **Opacity** slider to change the intensity of the skin filter applied.


Use the color palette to choose a color for the desired skin filter.

Use the eyedropper tool  to sample a color from the image and use it for the skin filters.


Click the  button to apply paint to the image. Click and drag the mouse over the image to apply color manually as desired.

Click the  button to create a smudging effect on the image. Click and drag the mouse over the image. The tool picks up color where the stroke begins and spreads it in the direction of the stroke.

Click the  button to smooth hard edges or sharp areas of the image and reduce unwanted details. Click and drag the mouse over the image to smooth the pimples, wrinkles or other blemishes of the skin.

Click the  button if you are not satisfied with any changes that you have made. Click and drag the mouse over the image to restore the image to its previous state.

Tips:

Click and hold down the  button to view the original picture for comparison. Release it to

view the edited picture again.



Click the button to return back to the original unedited image and discard all your changes.

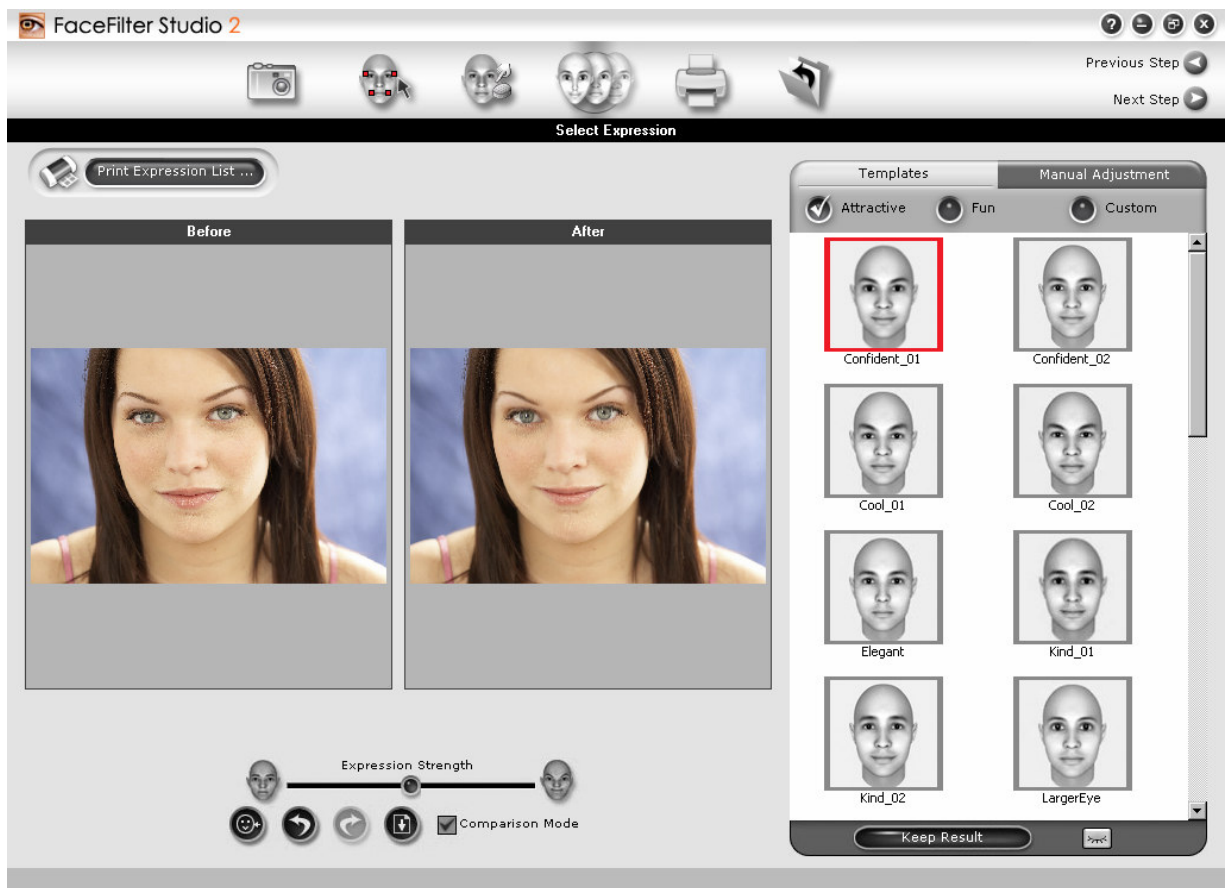


4 - Selecting an expression

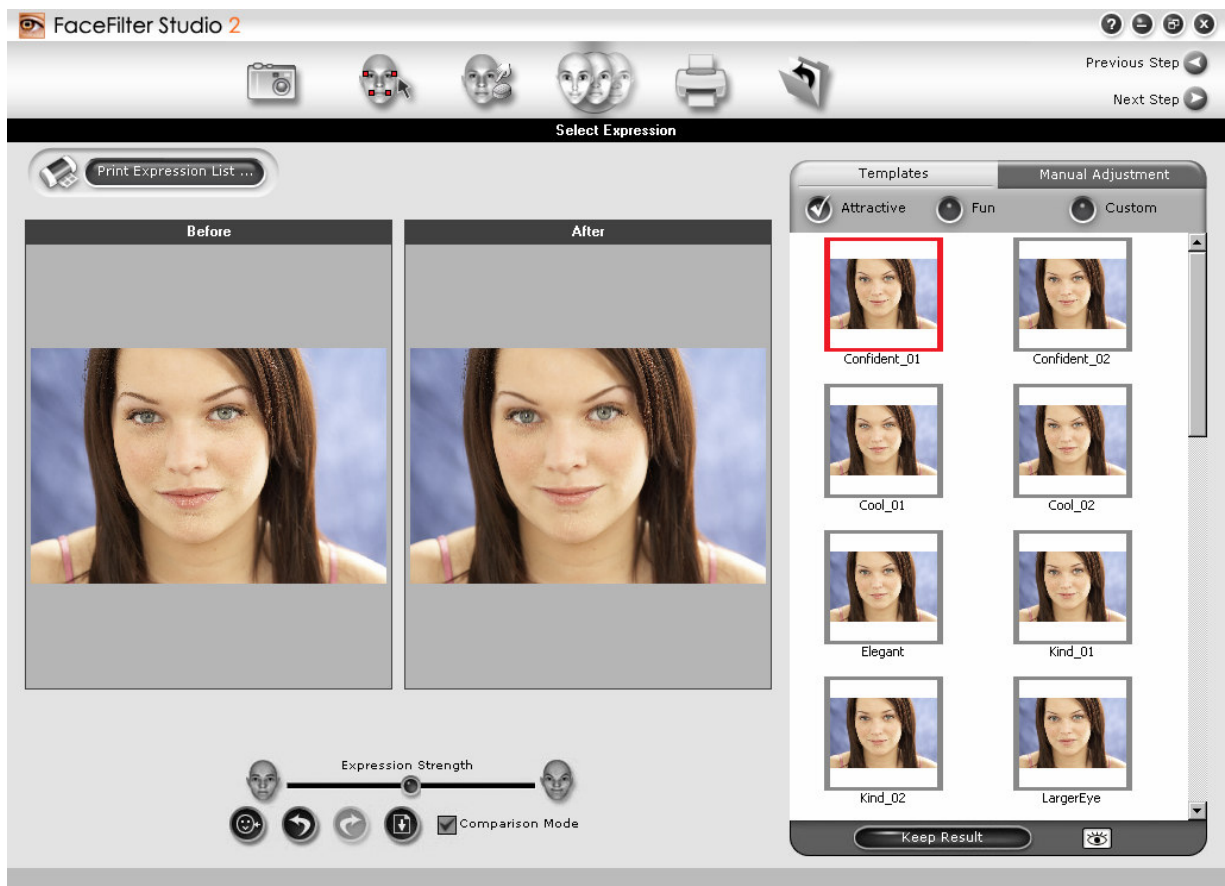
Select Expression enables you to apply an expression filter to your image after you have fit the facial mask. Open the Select Expression screen and follow these instructions.

Check **Comparison Mode** to view your image before and after a filter is applied.

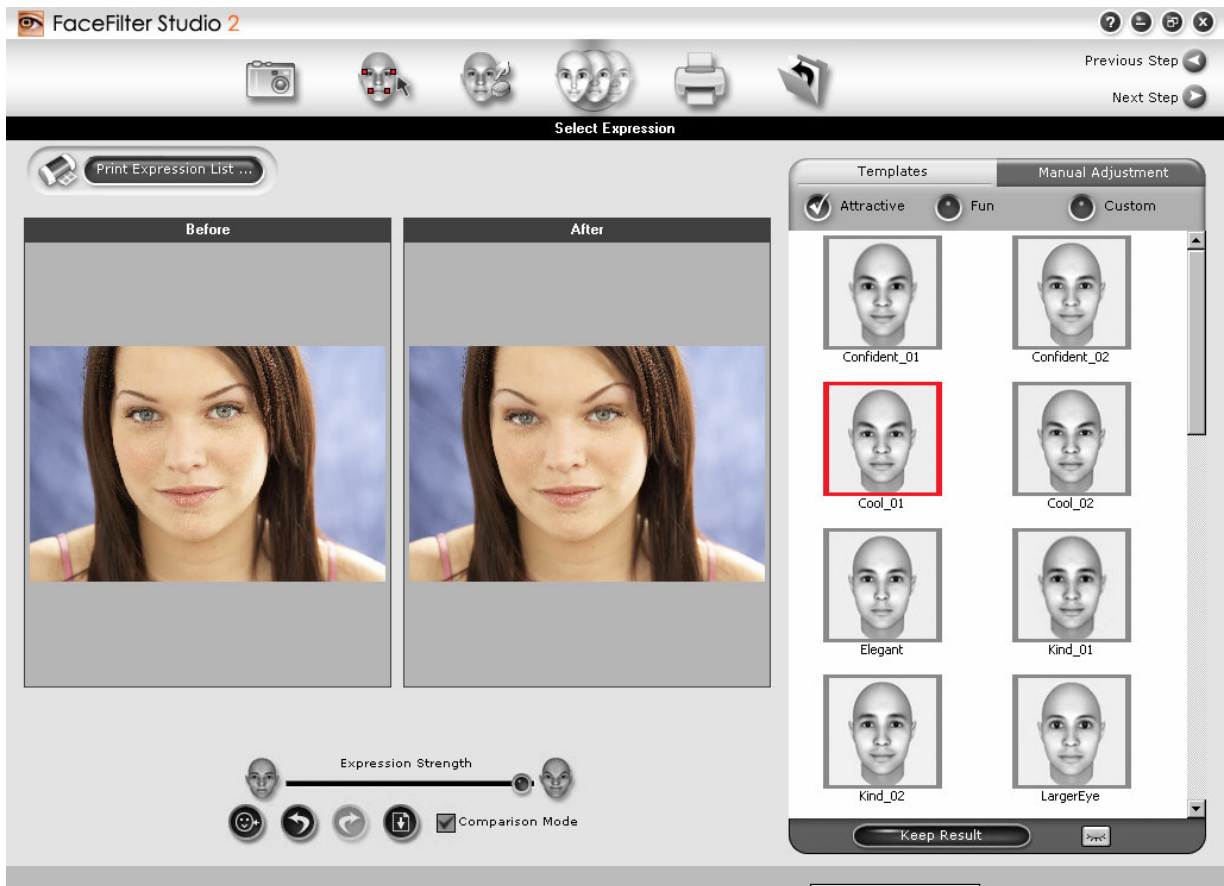
Select an expression filter from the template gallery.



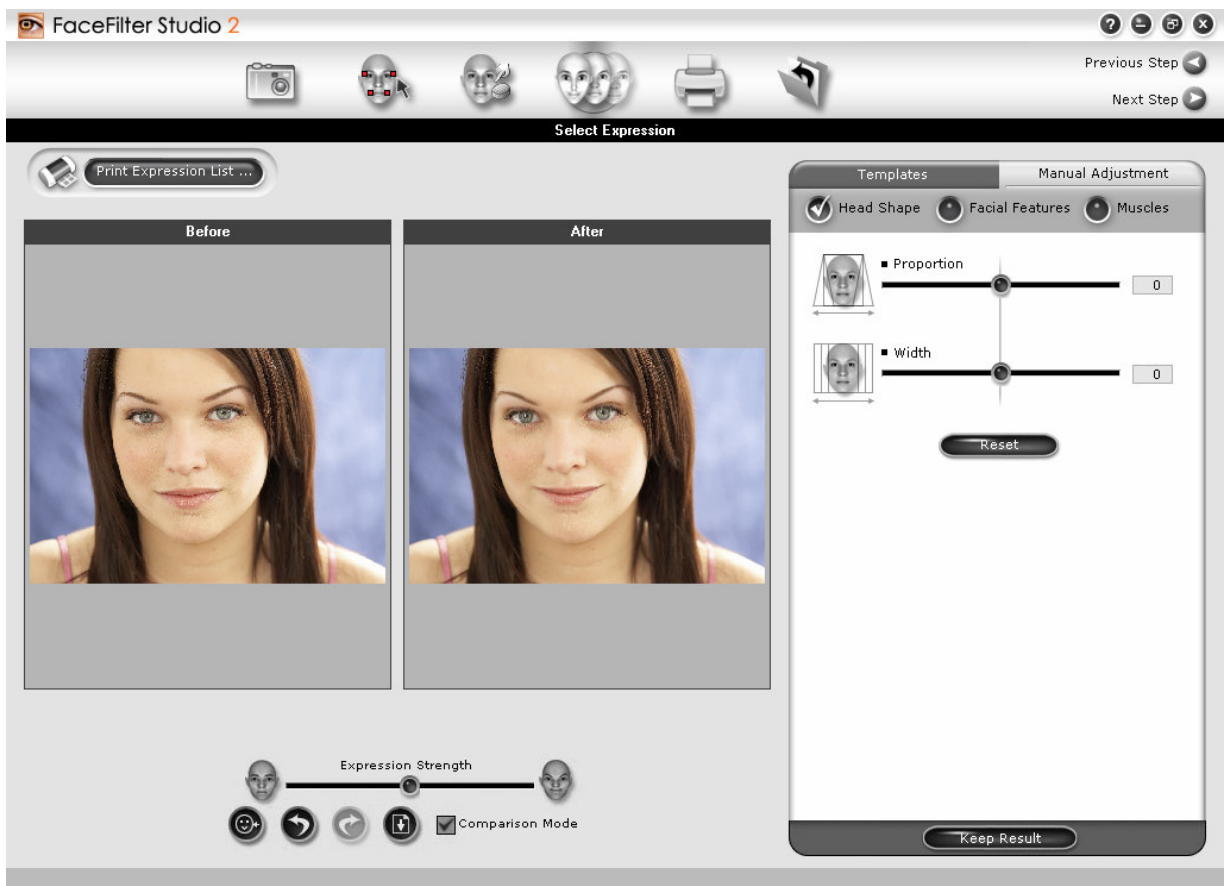
The template gallery consists of expression filters that are attractive (confident, slim, young, etc.), fun (alien, angry, make face, etc.) or custom filters that you can create and save.



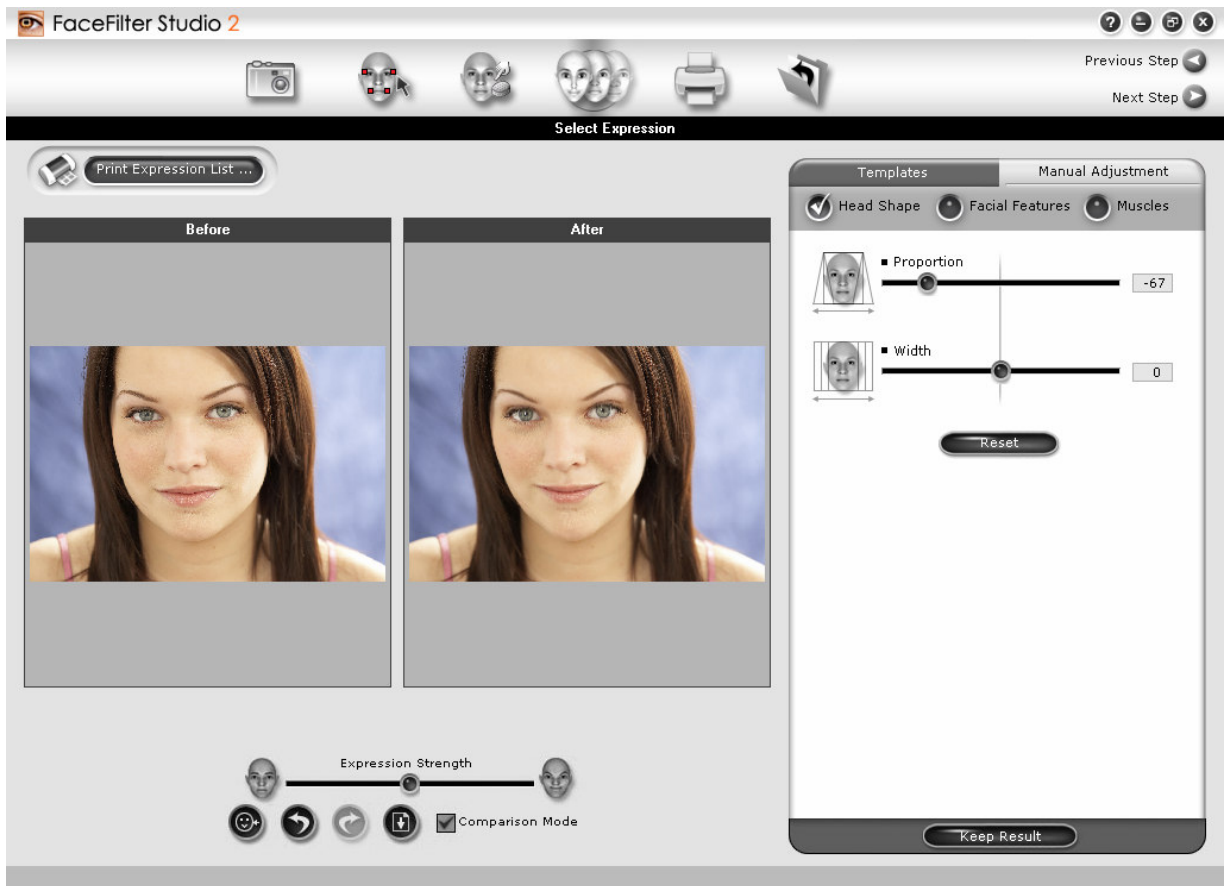
Check **Preview** to view a thumbnail of your image with the template filters applied.



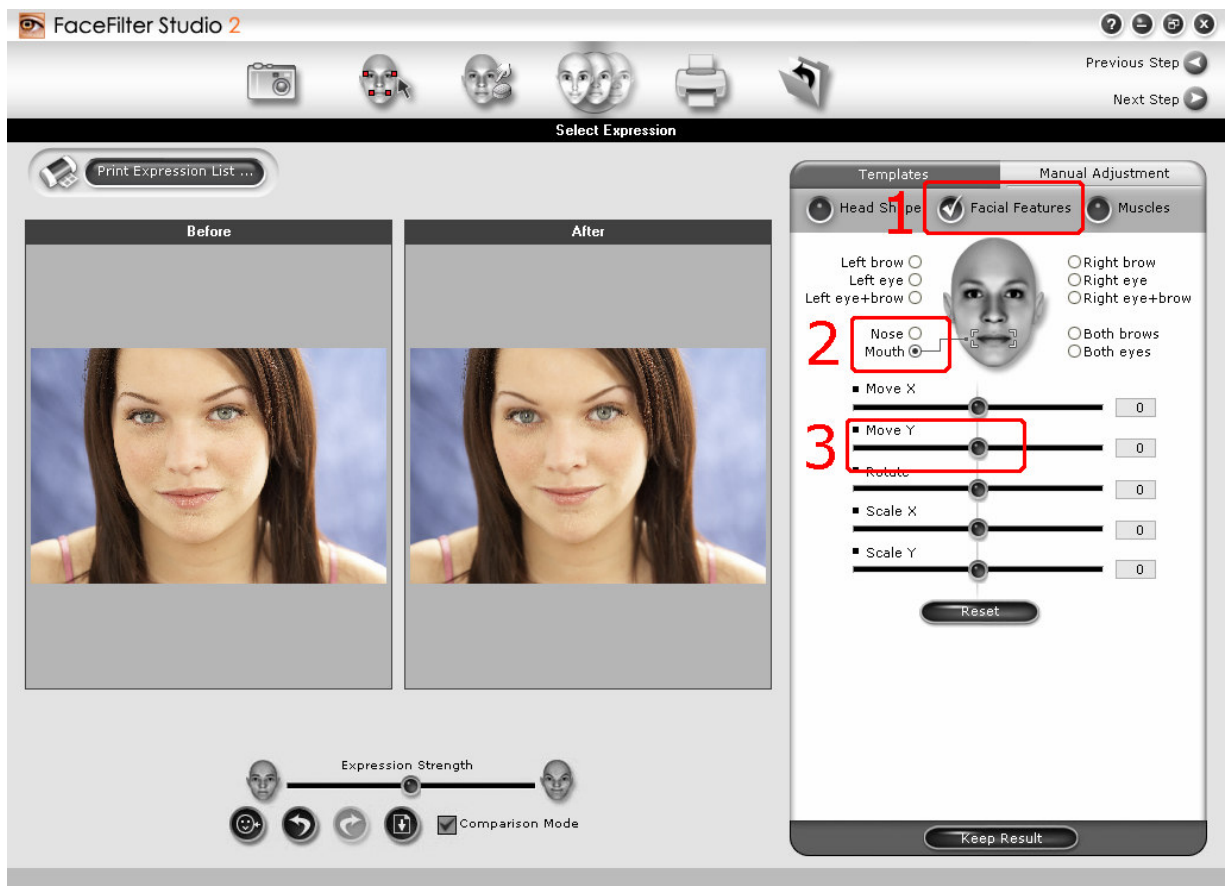
Drag the **Expression Strength** slider to increase or decrease the magnitude of the change that the selected action applies to the image.



Click the **Manual Adjustment** tab to manually adjust the filter applied to the image.
Check **Head Shape**, and drag the sliders to adjust the shape of the image's head.

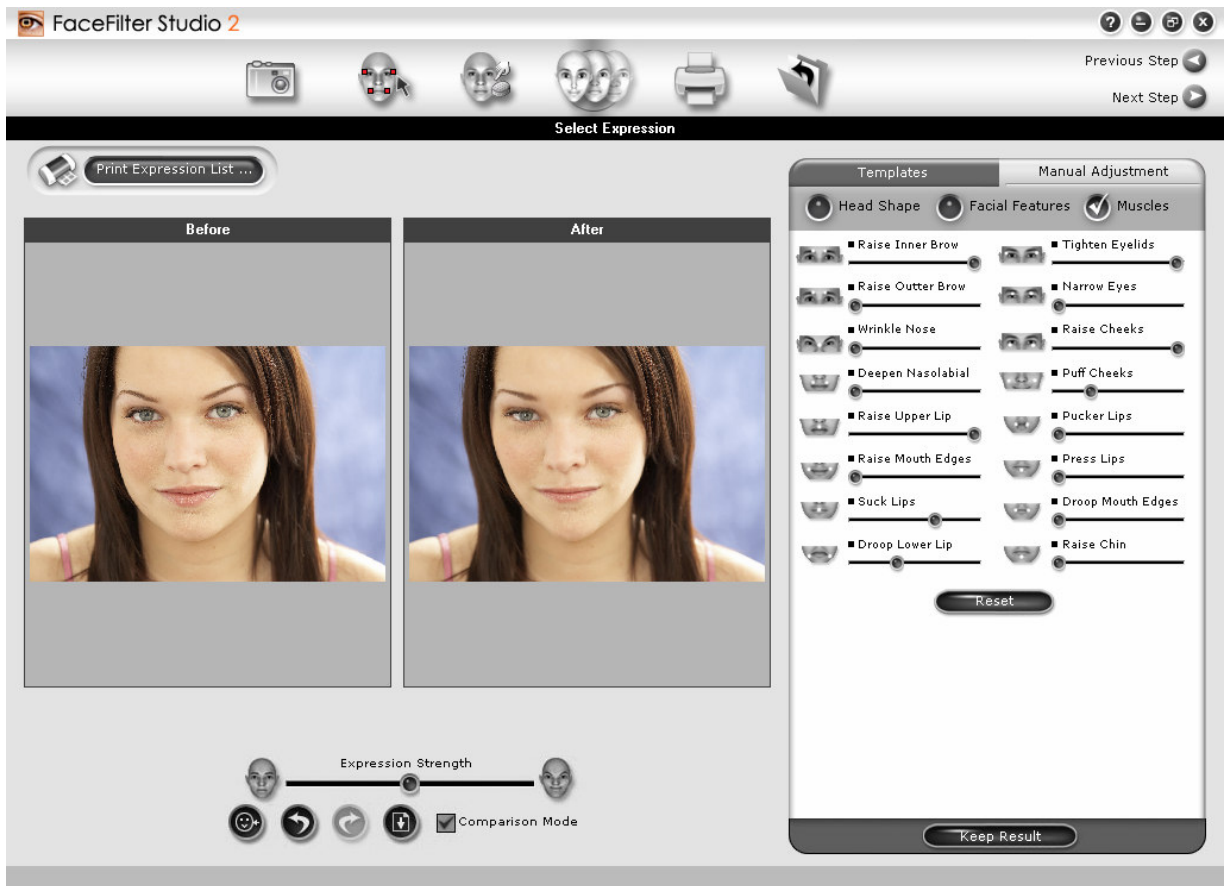


Drag the **Proportion** slider to make the lower part of the face more proportional to the upper part.
Drag the **Width** slider to adjust the width of the head.



Check **Facial Features** to manually adjust facial features (1).

Check one of the Facial Feature options at the top (2) and drag the sliders (3) to adjust the position and size of the selected facial feature.



Check **Muscles** to make modifications to the muscular features of the image.

Click and drag any of the sliders to change the muscular features and add effects such as lip depression, raising of the chin, wrinkling of the nose, puffing of the cheeks, and so on.

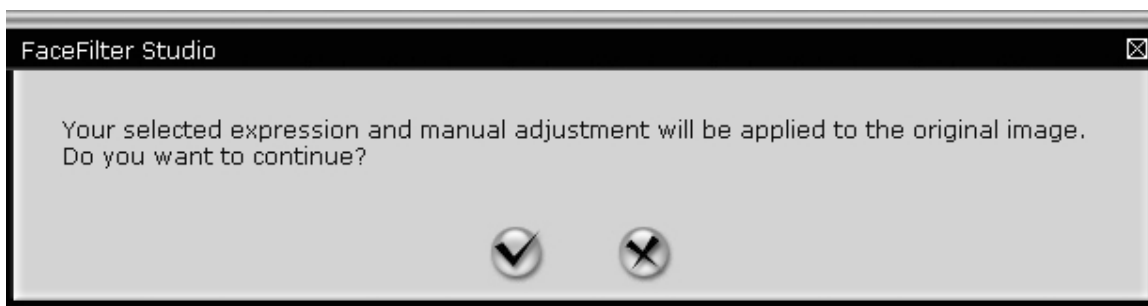


Click the button to save the changes you made in expression strength or manual adjustments and create a new custom template from the changes. You are prompted to type in a name for the new template and the template is saved in the custom template gallery.

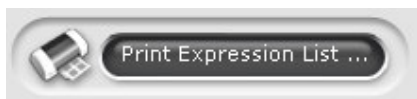
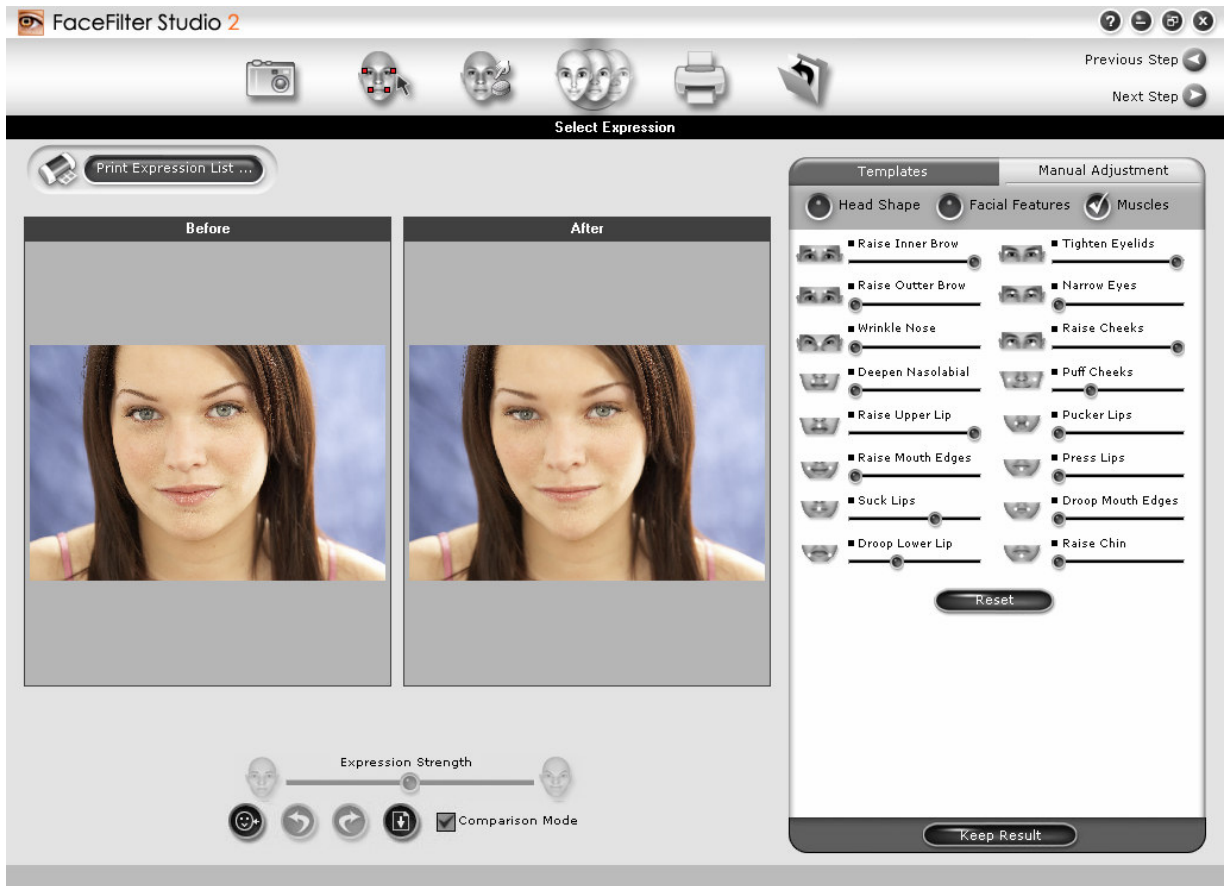
When you have finished making your adjustments, click the **Keep Result** button in order to retain the previous editing changes, before applying new changes. Using the Keep Result tab, a number of successive expression templates can be applied to the image, and the cumulative effect is observed.



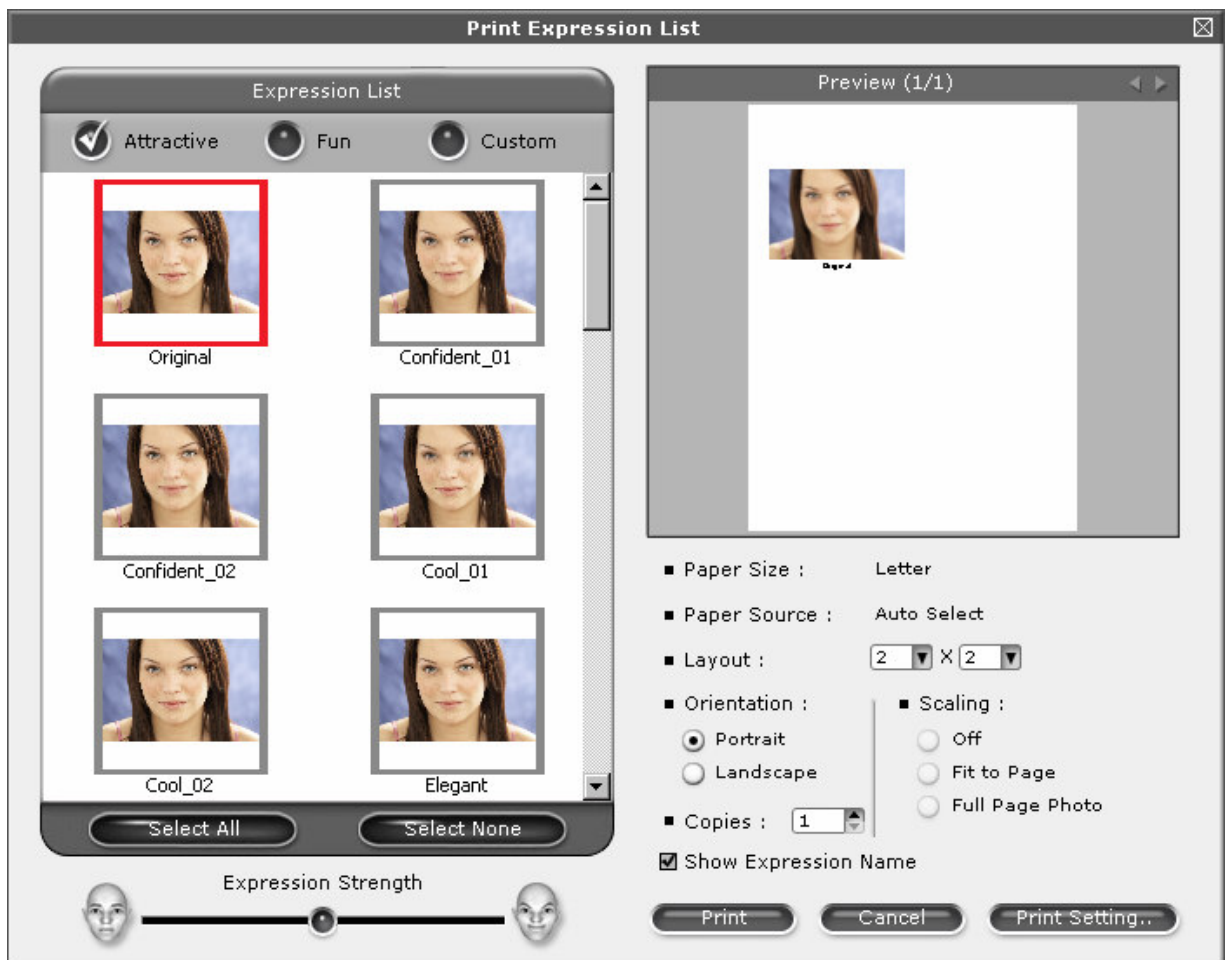
You are prompted to confirm the action.



Click the checkmark to confirm the action. The results are saved to your image and the Before image changes to reflect the saved results.



Click the button to invoke another dialog box for printing out your image with different expressions.



Tip: This feature is especially useful, when a specific facial feature is desired. The feature can be achieved using the Manual Adjustments, and a template expression can then be applied for best results.

Consider the case where a specific facial feature such as 'larger eyes' and a template expression such as 'Smile' are both desired. Use Manual Adjustments to change the eye shape as desired, click **Keep Result** to save this change, then select the smile expression template. Both facial changes are thus obtained.

In case multiple templates from the template gallery are needed to be applied to the face, only the last template selected is seen as the result image. Use **Keep Result** so that the result image after each template expression is saved and the accumulated effect of all the templates is achieved.




5 - Printing the image

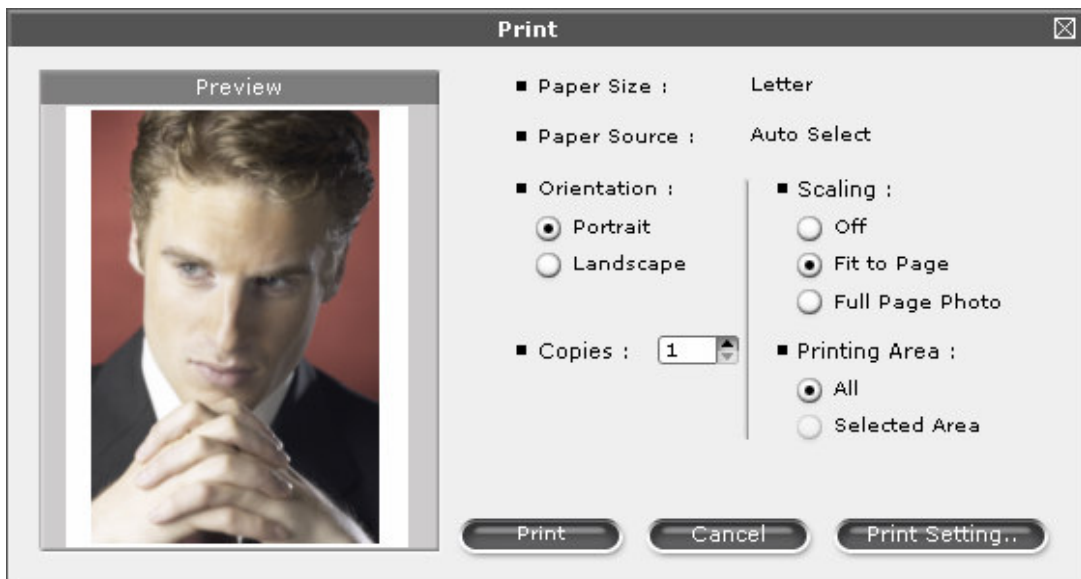
After you have finished applying filters and adjusting your image, use this menu to print your image with the changes.



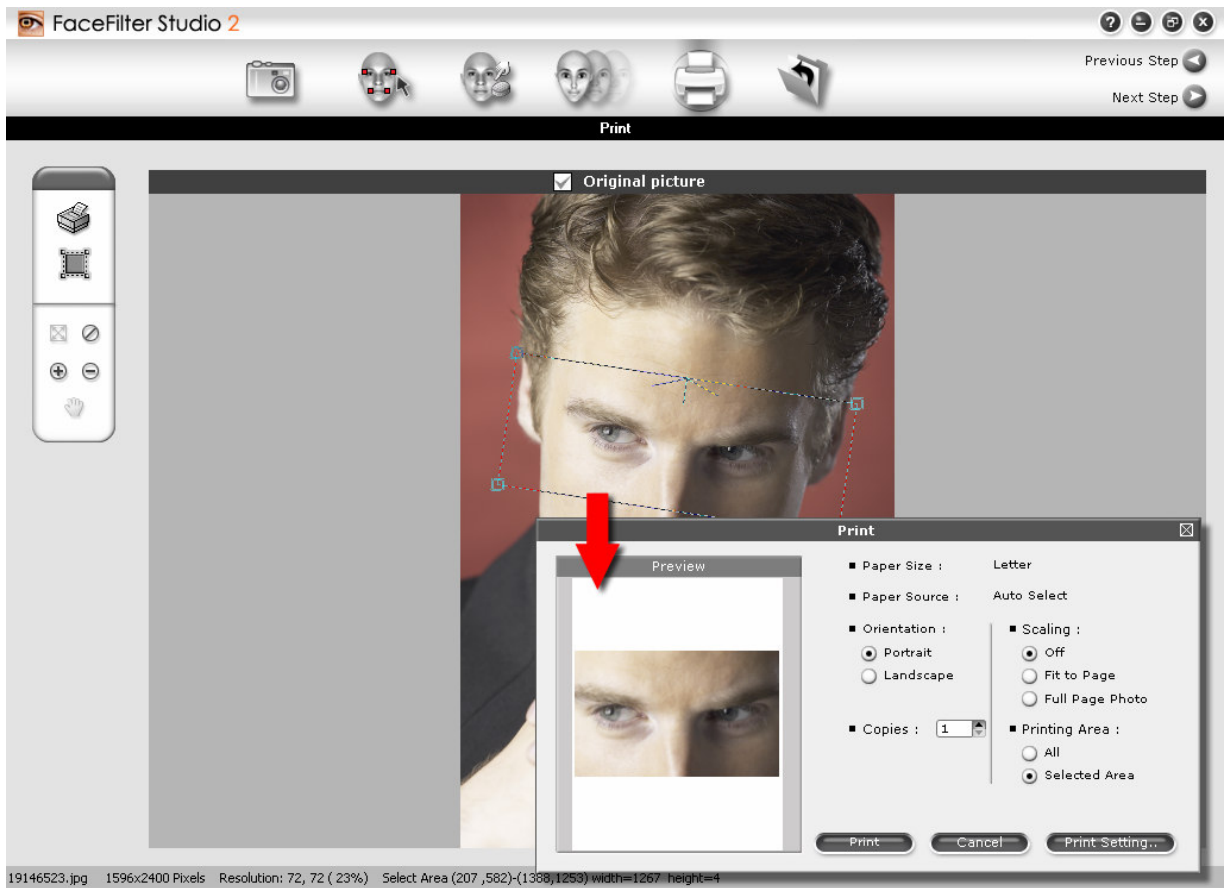



Check ☒ **Original picture** to view the original image. Uncheck it to return to your edited image.

Click  to print your edited image via your printer. You are prompted a dialog box of further settings for printing.



Adjust the settings and click **Print** to print out onto a page.



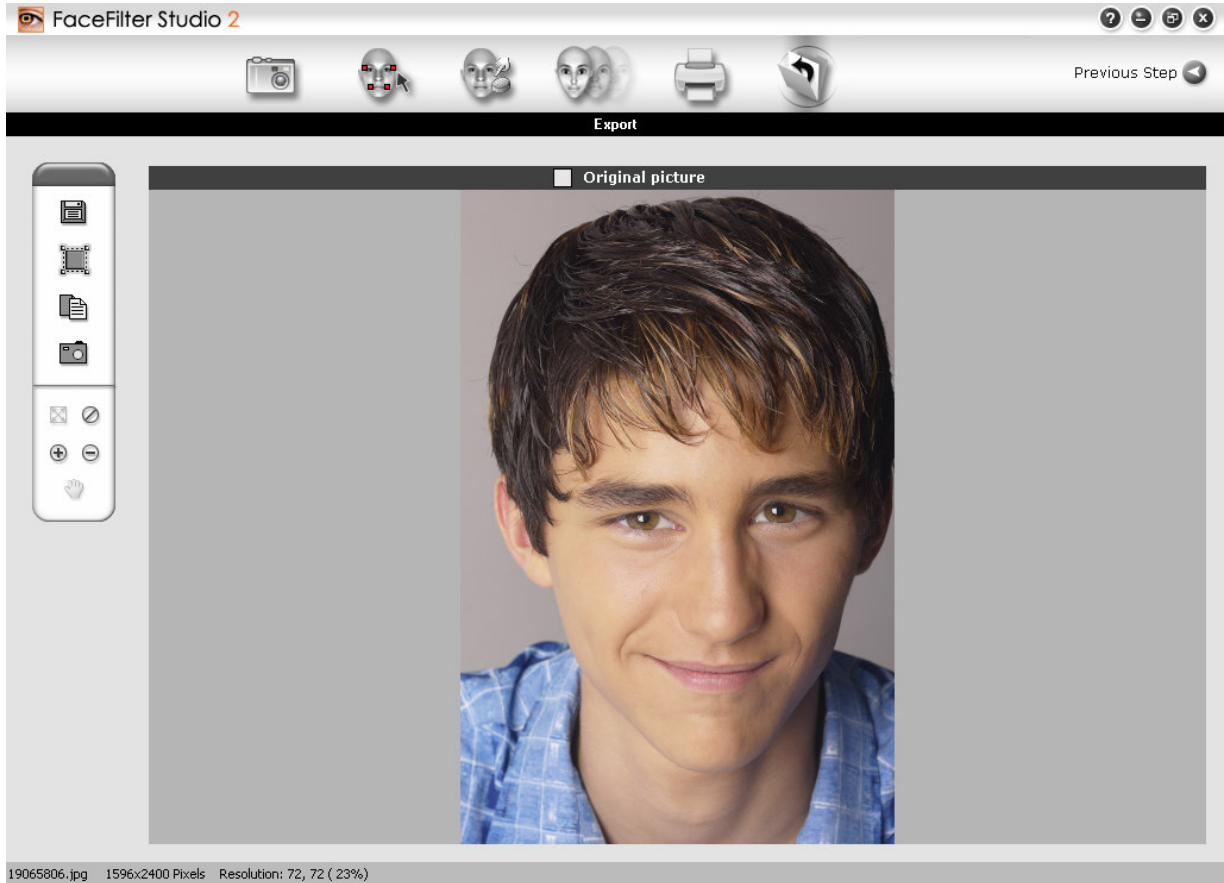
Click , click and drag on the image to make a cropped area for printing.

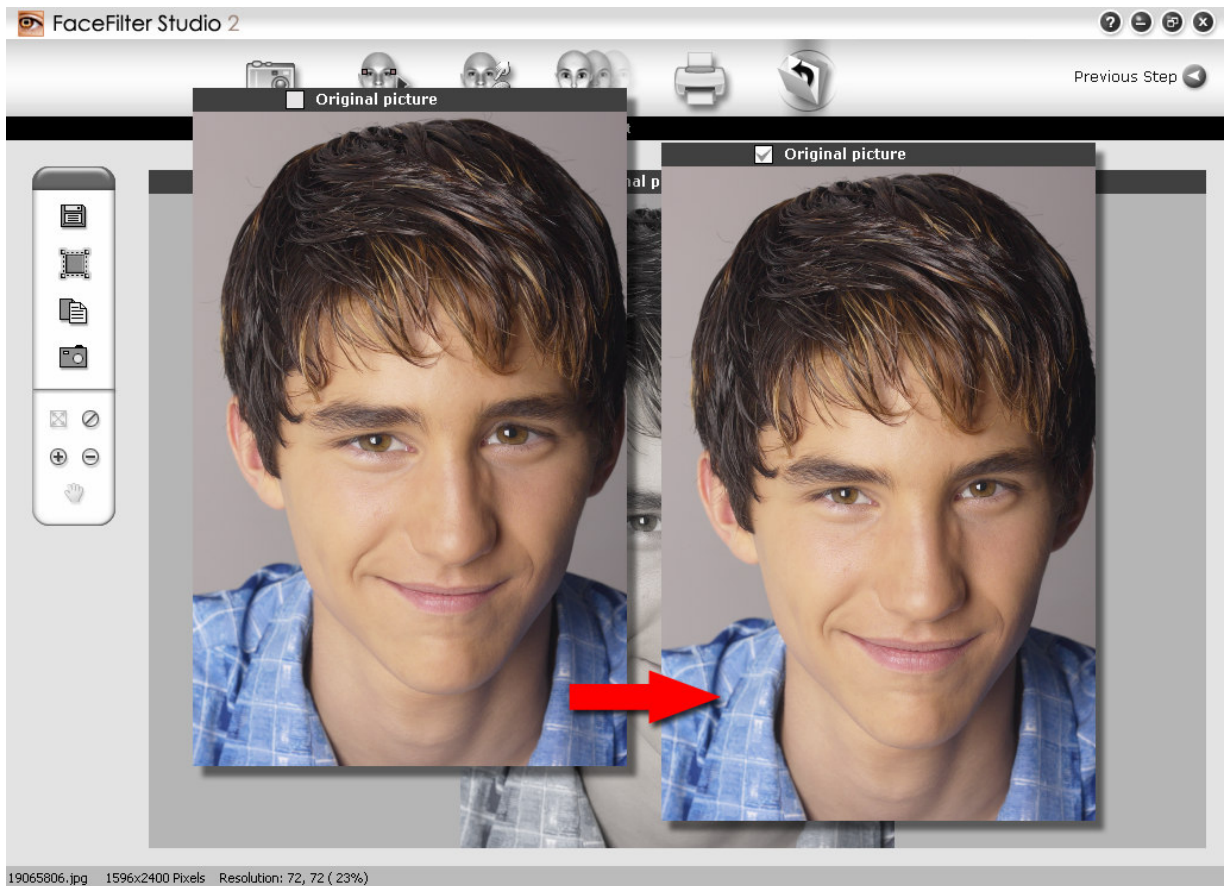
Click a corner and drag to rotate the image. Click a corner or side and drag in or out to scale the cropped area.




6 - Exporting the image

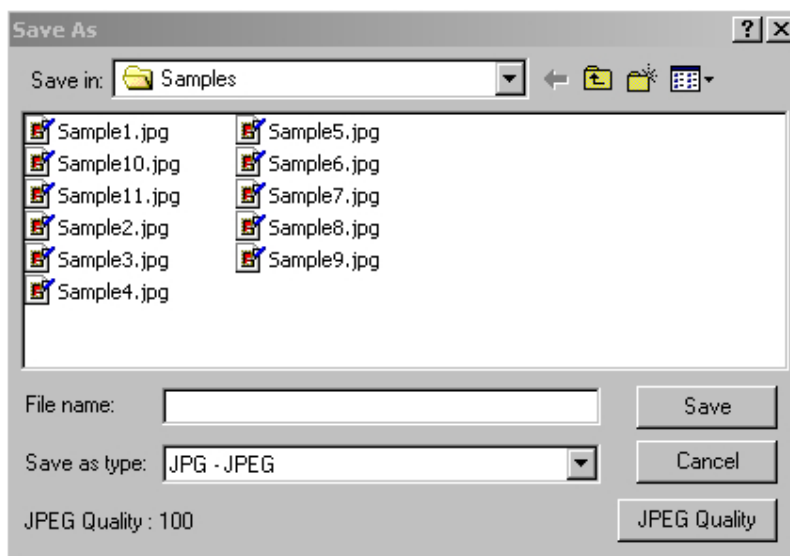
After you have finished applying filters and adjusting your image, use this menu to save your image with the changes.



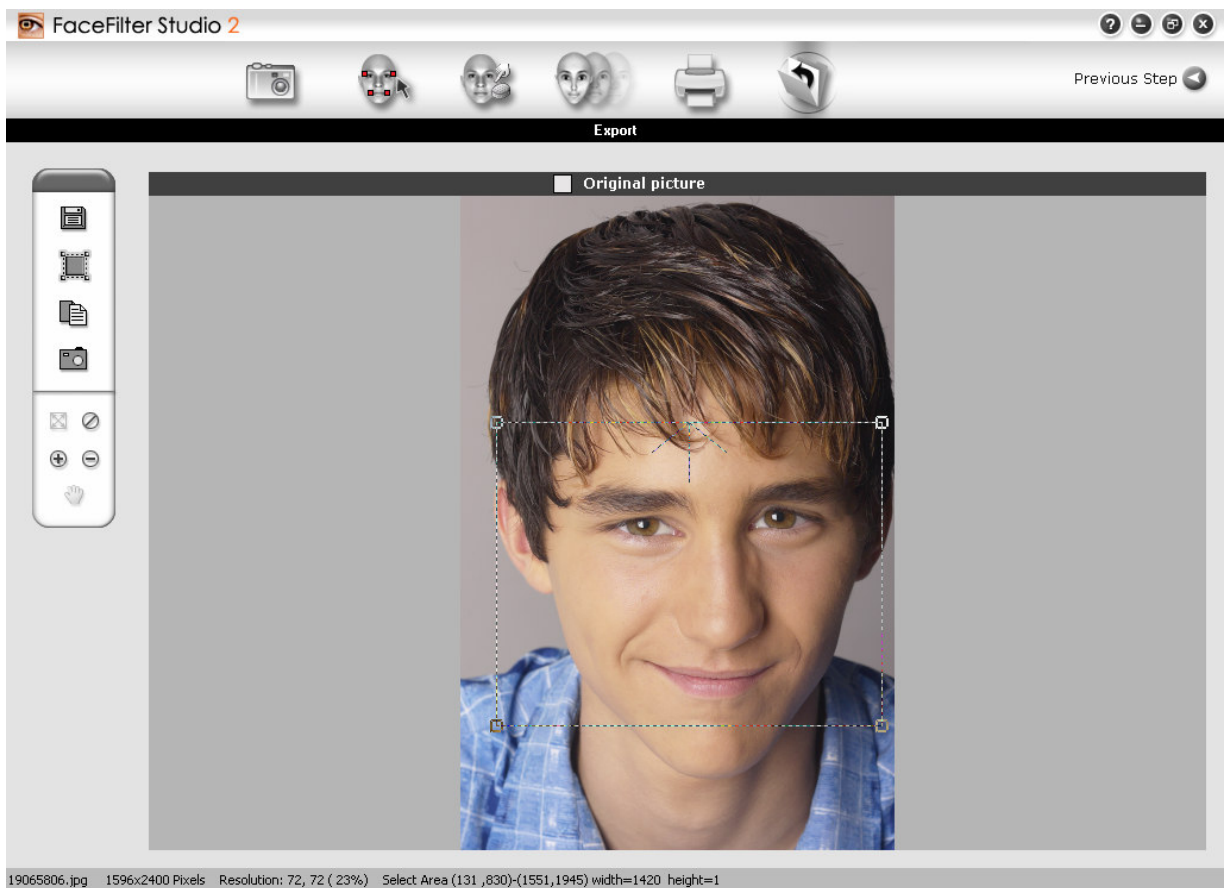


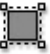
Check ☐ **Original picture** to view the original image. Uncheck it to return to your edited image.

Click  to save your edited image to your hard drive. You are prompted for a file name.




Browse to the file location you want and type a file name. Click **Save** to save the file.




Click  and click and drag on the image to select the output area. If you then click the save button to save it as another file, it will only save the area you have selected.



Click one of corners and drag to rotate the image. Click a corner or side and drag in or out to scale the image.

Click  to copy the image to the clipboard. You can past the image into any application that supports the clipboard function.

Click  to edit a different face in the same photograph.

Hints and tips

You can achieve more successful and effective results in you photo-editing, by using the following tips:

•Results using FaceFilter Studio 2

The following facial enhancements can be achieved by applying FaceFilter Studio 2 to a face image:

- Balanced facial features
- A younger face
- A slimmer, well proportioned face shape
- More attractive eyes (larger or smaller as desired)
- A more attractive nose
- Sexier lips
- A better, more attractive smile
- A smart and confident overall appearance.

•Choosing the proper photo

The selected photo should have the following characteristics:

- **Face:** Should face forward and be sharply defined
- **Expression:** Should not be exaggerated
- **Mouth:** Should be closed or with a small smile.
- **Group shot:** Could have distinct faces for all people in the shot.

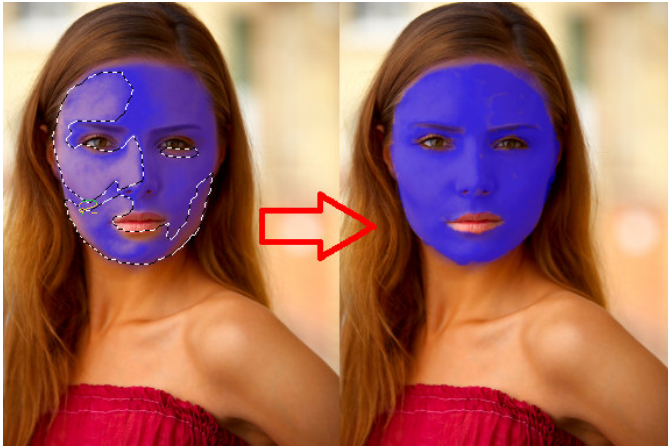
•Cropping the image

- If the facial region is left uncropped in the input image, the face will be too small in the Fit Facial Mask and Select Expression steps.

- Use the Scale Image tab in the first step to crop the face, in order to achieve better results. This causes the face to be resized to the fitting window.

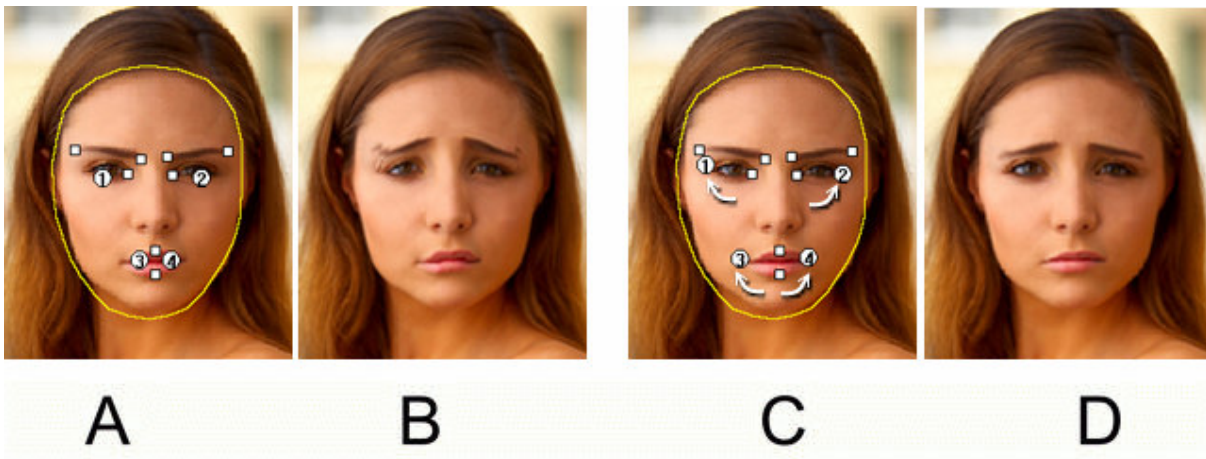
• Fitting the facial mask

The facial mask can be applied manually or automatically to the selected image. Note that the facial mask and contour are the key elements in determining the accuracy of your final result. Even if you use all the skin filters and smoothen the skin, add skin tone, or remove glossy areas to a large extent, an accurate facial mask is crucial to obtain a clean and natural resultant image. Make sure that your facial mask is as accurate as possible before proceeding to applying skin filters and facial expressions.



• Preventing distortion in the eyes and mouth

When adjusting the facial mask, placing the control points incorrectly (**A**) can result in the eyes and the mouth "drooping" at the corners (**B**).



Adjusting the Image with the sad filter

To prevent this, ensure that you place the control points at the corners (**C**) of the mouth and eyes to get a more accurate representation of the facial filter (**D**).

- **What shall I do if there are more than one pair of red eyes glittering in one image? Fix them one at a time with the "Add eye color" function?**

Please use the brand new function, **Red-eye Reduction**, instead to remove them in just one click!

- **The light is too dark when the photo is taken and no flash is using, which results in dim faces.**

The new function, **Smart Portrait**, can fix all the dark or over-exposed faces so that they look brighter and clearer. It utilizes **face detection** and **skin color detection** technology, automatically compensate poor human images caused by low light or back light condition. The human in the photo would look more distinctive and with vivid skin color.

- **Print expression list can only print faces with different expressions. What if I want to have faces with only one expression?**

Please use **Save as template** button to add one expression into the custom gallery for as many times as you want, and select them all then in the **Print Expression List** dialog box.

- **Adjusting the facial expression**

Adjusting the right facial expression is crucial to obtaining precise and realistic facial changes in the image. Note that the **expression templates** are mutually exclusive and the new selected expression template replaces the original one. Use the **Keep Result** button to retain the current result obtained by applying an expression template, and apply subsequent templates on the face image.

Recommended Procedure:

- Enhance or improve the facial features, by making the face balanced.
- Click **Keep Result**.
- Apply one attractive template, such as smile or slim.
- Click **Keep Result**.
- Apply another attractive template or adjust head shape, using **Manual Adjustments**.
- Click **Keep Result**.
- Fine tune the final result by adjusting facial features, using **Manual Adjustments**.

- **Adding highlights to hair**

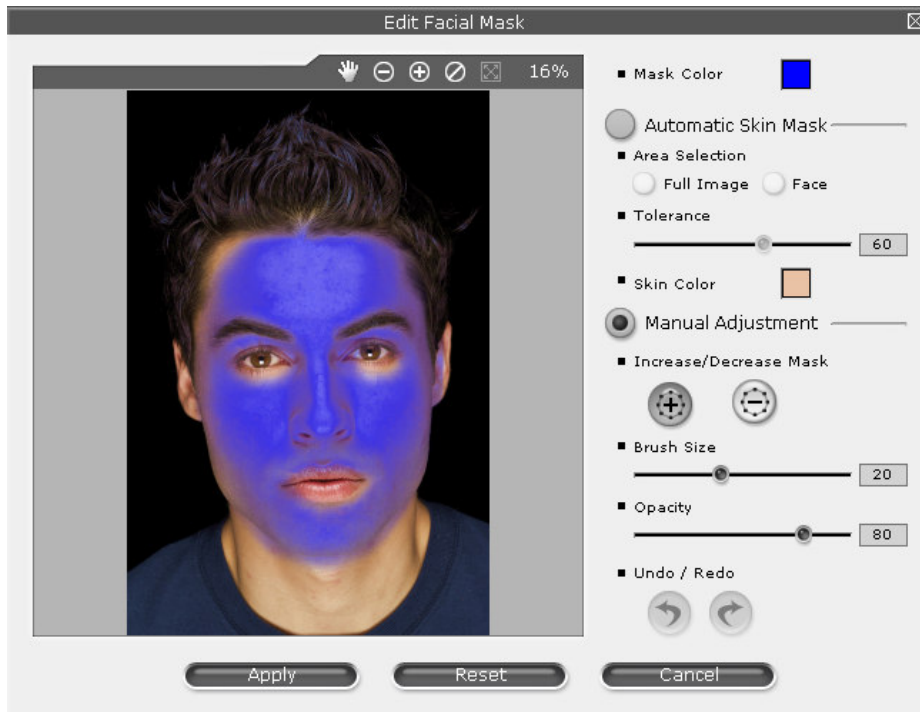
To add highlights to your hair, use the **Adjust Skin Tone** function provided in the **Filter Skin** menu.

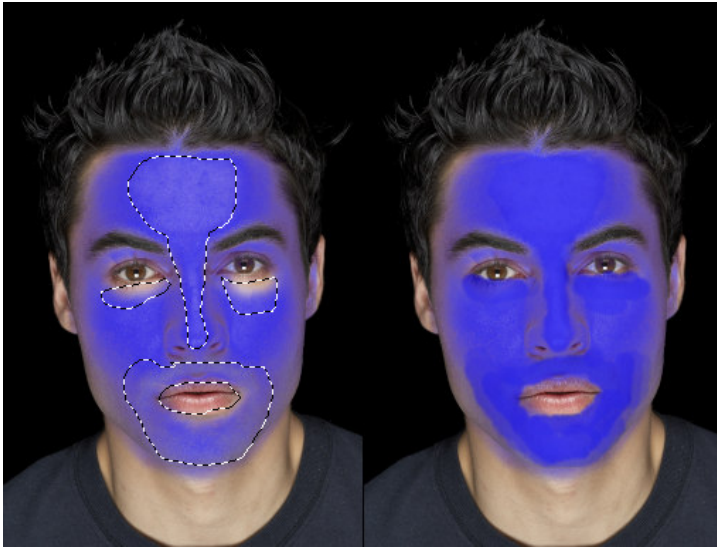
First, use the Edit Facial Mask function to select the hair region as part of the facial mask. Next select a bright color to tint your hair by using the Adjust Skin Tone function. The selected color is added as a highlight to the original hair color.

- The face looks greasy in the image, what shall I do about it?

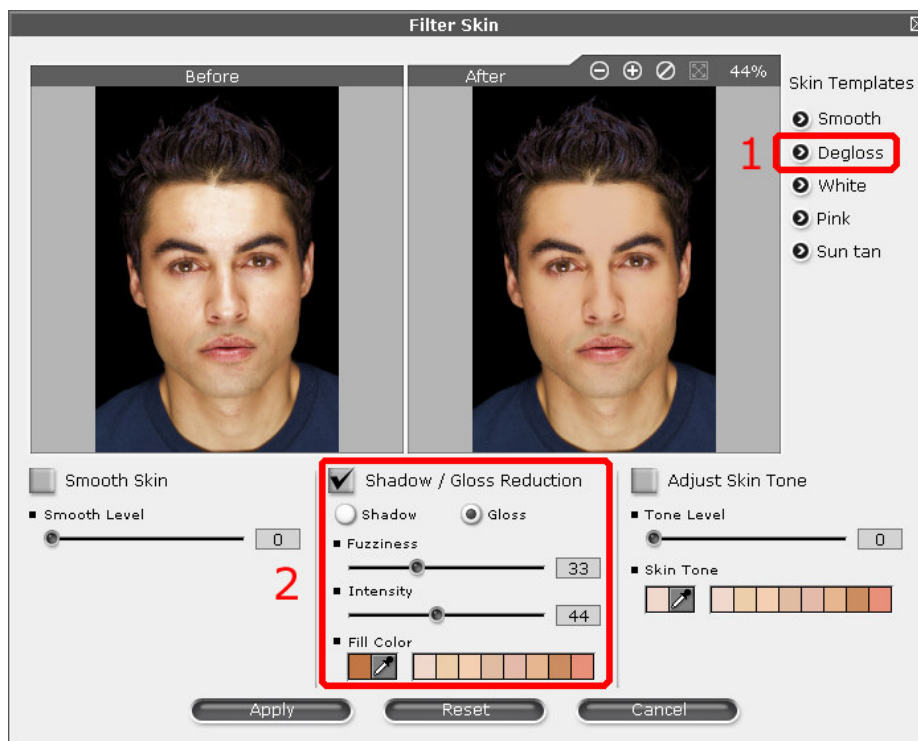


You can edit the facial mask through the "edit facial mask" tool and increase the area manually, especially the gloss part on the face

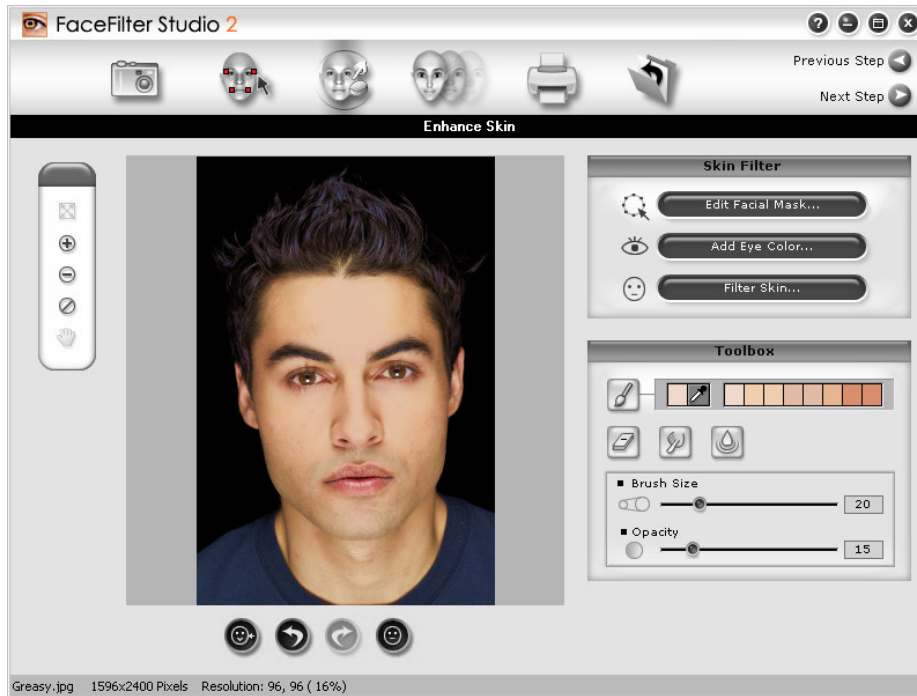




Remember to set the opacity higher so the filter applied later can be stronger to the selected area. After editing, access the “Filter Skin” tool and click the filter “Degloss” at the right side.



Adjust the controls till the extra gloss of the face is eliminated.



•Using images from other imaging tools

You can use FaceFilter Studio 2 concurrently with other graphics tools to edit your images. If you copy the image to the clipboard from the image editing application, you can use the Paste function to edit it with FaceFilter Studio 2. After editing the face, you can paste it back to the original image editing tool window.

Keyboard shortcuts

You can use the following hotkeys or keyboard shortcuts, for performing common tasks in FaceFilter Studio 2. These keys are simply another way of accomplishing your objective.

Main Menu:

Shortcut Key	Task
Ctrl+1	Select Image
Ctrl+2	Fit Facial Mask
Ctrl+3	Enhance Skin
Ctrl+4	Select Expression
Ctrl+5	Print
Ctrl+6	Export
Backspace	Previous step
Enter	Next step

Select Image Menu:

Shortcut Key	Task
Ctrl+O	Open
Ctrl+S	Select Face
Ctrl+V	Paste
Ctrl+R	Rotate CW
Ctrl+E	Rotate CCW
Ctrl+C	Smart Color
Ctrl+L	Adjust Color Level
Ctrl+B	Adjust Color Balance
*	Fit to screen
+	Zoom in
-	Zoom out
/	Actual Size
Ctrl+H	Hand Tool
Ctrl+Z	Undo
Ctrl+Y	Redo

Fit Facial Mask Menu:

Shortcut Key	Task
Ctrl+R	Refit Facial Mask
Ctrl+A	Auto-fitting
Ctrl+M	Manual-fitting

Enhance Skin Menu:

Shortcut Key	Task
Ctrl+M	Edit Facial Mask
Ctrl+E	Add Eye Color
Ctrl+F	Filter Skin
Ctrl+P	PaintBrush
Ctrl+R	Restore
Ctrl+S	Smudge
Ctrl+O	Smooth
,	Decrease brush size
.	Increase brush size
*	Fit to screen
+	Zoom in
-	Zoom out
/	Actual Size
Ctrl+H	Hand Tool
Ctrl+Z	Undo
Ctrl+Y	Redo

Select Expression Menu:

Shortcut Key	Task
Ctrl+Z	Undo
Ctrl+Y	Redo
Ctrl+R	Reset
Ctrl+S	Save
Space Bar	Comparison Mode
Ctrl+K	Keep Result
Ctrl+V	Preview

Print Image Menu:

Shortcut Key	Task
Ctrl+P	Print
Ctrl+S	Crop
Space Bar	Original Picture
*	Fit to screen
+	Zoom In
-	Zoom Out
/	Actual Size
Ctrl+H	Hand Tool

Export Image Menu:

Shortcut Key	Task
Space Bar	Original Picture
Ctrl+A	Save As
Ctrl+S	Select Output Area
Ctrl+C	Copy to clipboard
Ctrl+E	Edit different face
*	Fit to Screen
+	Zoom In
-	Zoom Out
/	Actual Size
Ctrl+H	Hand Tool

Frequently asked questions

Refer to the following FAQ, to resolve any problems encountered while using FaceFilter Studio 2.

- **Error Message: "FaceFilter Studio 2 requires to be run at 800x600 resolution and 16-bit color depth or above. Please change your display mode and try again."**

The most common reason for this error is the resolution of the host system. If the host system is running in 256 color mode, this error message is displayed. FaceFilter Studio 2 must be run in **High color(16bit)** or **True color(32bit)** mode. The resolution can quickly and easily be changed in the display settings found in your control panel.

If this does not solve your problem, ensure you have the correct or most recent video card drivers installed for your display adapter. Refer to your display adapter manufacturers information for updates regarding Direct Draw support.

- **Why is my face in Fit Facial Mask very small? Or it is difficult to fit the facial mask on the face image. How can I make it better?**

Use the **Scale Image** tool in Step 1 to crop your face. It is recommended to select only the face region. Your selected region will resize to fit the whole window in the successive steps. Using the Scale image tool to maximize the facial area will generate better results. A larger facial area makes it easier to fit the facial mask.

- **Why is the expression change in my image, not obvious?**

The most common reason for this may be due to an incorrect facial mask. Ensure that the face selected in the first step is straight, by using the rotate feature while cropping the face. Next ensure that the facial mask is applied accurately.

- **Can I select both smile and slim expression?**

Sure. FaceFilter Studio 2 provides you with the **Keep Result** button to accumulate your expressions and apply them one after another. Click on this button to retain all expressions that are applied to the image.

- **Why does my previous manual adjustment disappear when I select a new expression?**

When you select any new expression from the expression gallery, your previous expression or adjustment will be overwritten by new selected expression. If you wish to add a new expression on your previously edited face image, click on **Keep Result** button before you click on a new expression template. All changes to the image will then be retained and accumulated on the image.


- **Can I use the Undo function in Select Expression to return to the status before Keep Result?**

No. After you press Keep Result button, all the adjustments or selected expressions will be applied subsequently on your face and cannot be undone

- **Why is the result of auto fitting the facial mask incorrect?**

The automatic fitting of the facial mask may be incorrect if, after cropping, the face is

turned to the side or is not completely straight. Press the

A rectangular button with rounded corners and a dark, slightly textured background. The text "Refit Facial Mask" is centered on the button in a white, sans-serif font.

button and use the **Manual fitting** function to manually fit the 4 facial feature points.

- **What should I do if my face is blurred after using the Smooth Skin Filter?**

Use the **Restore** tool to restore the image to its previous state. Drag the mouse over the facial areas such as eyebrows, eyes, mouth, or the nose edge to remove the blurring as required.

- **Why do I not see any changes when I apply any skin filters?**

Edit the facial mask before you apply any skin filters. Make sure the facial mask has well covered the selected facial area where the skin filter will be applied. Specific gloss areas such as, cheeks, forehead, or nose may require increasing the mask opacity for better result. You can increase the mask region by manually editing the facial mask.

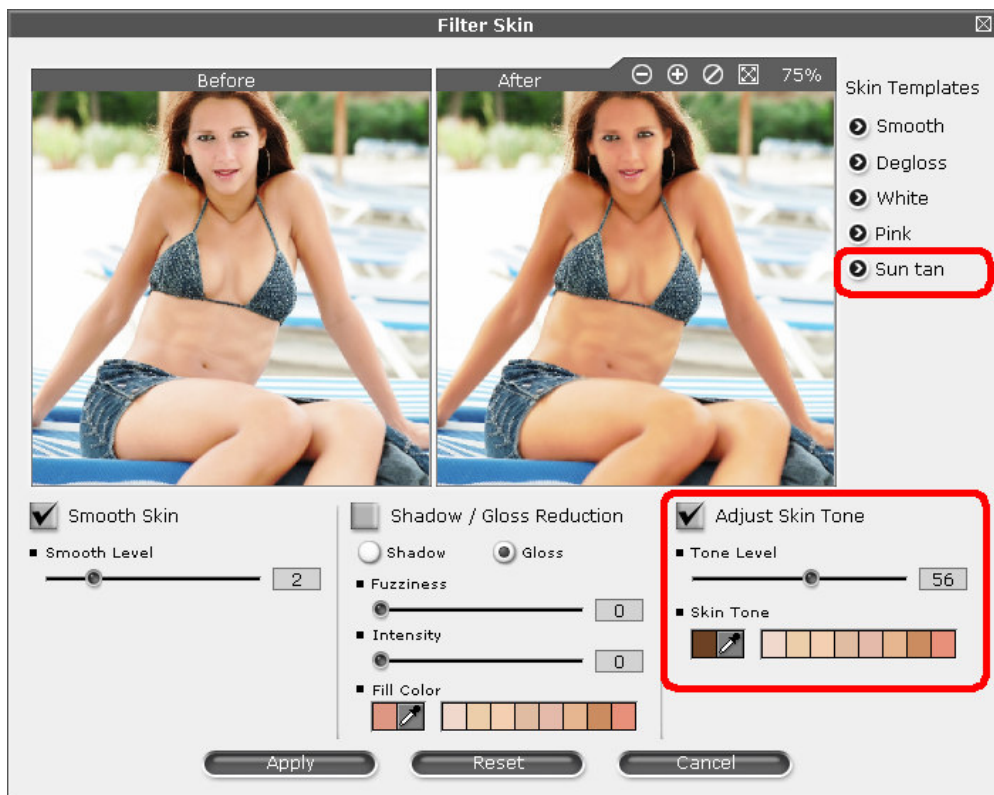
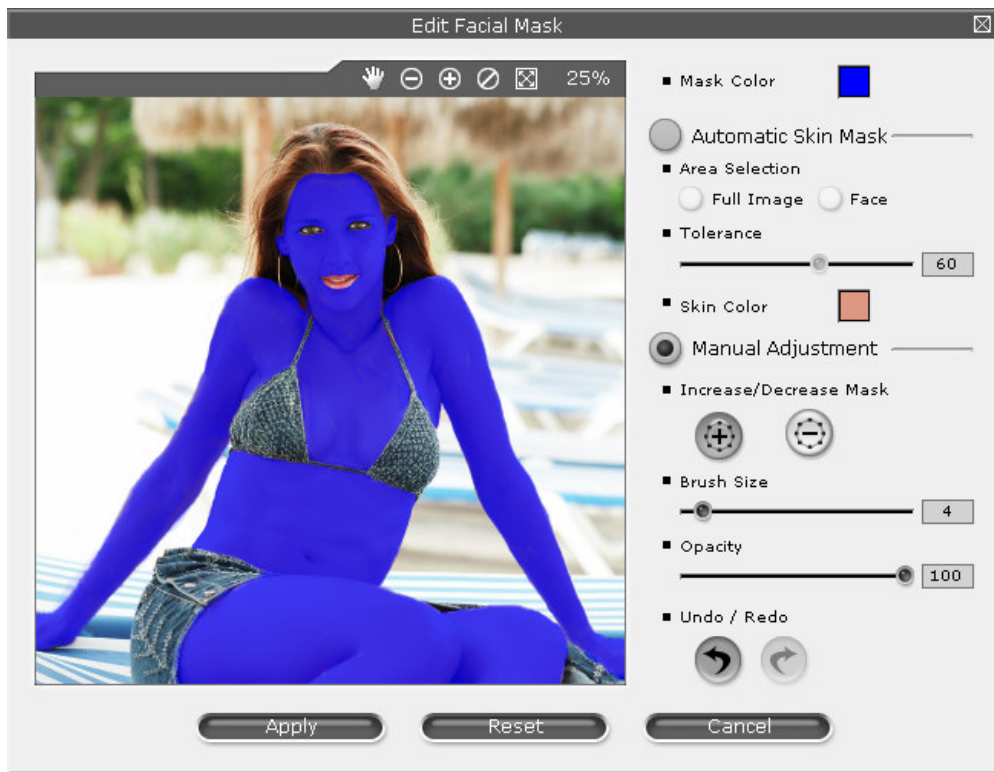
You can also remove the regions such as hair, mouth, or eyes that you don't want to be affected by the skin filters.

- **How can I make my face more pink or white?**

Use the **edit facial mask** tool and select **Face Boundary** to limit the facial filters only to the face. Next, manually edit the facial mask for more accurate results. Now use the **filter skin** function and check the **Adjust Skin Tone** box. Choose a bright color such as white or pink as the skin color and drag the **Tone Level slider** to adjust the skin tone as desired.

- **How can I add a sun tan effect to my facial and body skin?**

Use the **edit facial mask** tool and select **Full Image** to allow the facial filters to be applied to the entire image. Next, manually edit the facial mask for more accurate results. Now use the **filter skin** function and check the **Adjust Skin Tone** box. Choose a dark color such as brown or dark orange as the skin color and drag the **Tone Level slider** to adjust the skin tone as desired.



- **Why can't I remove all the red eyes in my image via "red-eye reduction" function?**

Red-eye reduction function can remove most of the red eyes in the image. However, because of the angle of the face or the size of the red-eyes (too small), some of them may not be detected by the application.

The resolution is easy. Simply switch to the "manual detect" mode and mark the non-selected red-eyes by yourself, all the red-eyes in your image can be removed.

See **Red-eye Reduction** for more details.

- **What's the difference between the "Red-eye Reduction" in the "Select an Image" menu and the "Add Eye Color" in the "Enhance Skin" menu?**

The "Add Eye Color" function provides you with merely changing one pair of red eyes at a time. And though it is automatic, the sensitivity is average.

The "Red-eye reduction", however, is a powerful tool that can detect up to 64 red eyes and remove them once. It saves you a lot of time from adding eye color one after another. It is not only automatic, but high-sensitivity.

- **Why does "Smart Portrait" fix the brightness of the the whole image instead of adjusting the facial part in the image only?**

Smart portrait automatically detects the faces in the image and adjusts the overall brightness of it. By means of this design, your faces will look much clearer and brighter in the image without looking oddly like a mask worn on your head. But if you intend to adjust only facial parts in the image, please use the "**Skin Filter**" tool to edit the facial area only.

- **Would it be possible if I want to print multiple faces applied with only one same expression on one paper with the "Print Expression" function?**

Of course! All you have to do is clicking **Save as template** in the "Expression List" menu many times so the custom gallery stored as many templates of same expression as you want, then you invoke the **Print Expression List** dialog box afterward to print multiple faces with one same expression in one paper.

- **With the "Print Expression" function, can I have all the faces in one image applied with different expressions individually?**

Sorry, we are afraid that the answer is "no". The **Print Expression List** function can only apply ALL the expressions to only ONE face in the image. As for the other faces for now, we must say sorry that the feature is not provided. But this could be manipulated in the future.

- **When I run FaceFilter Studio 2 first time after installation and click open button, it will open the folder in which all the sample files stored. But after open other images in different folders, I can't find the samples anymore. Where are they?**

Please find these sample files in the paths listed below:

C:\Documents and Settings\All Users\Documents\Reallusion\FaceFilter Studio 2\

C:\Program Files\Reallusion\FaceFilter Studio 2\Samples\

If your problem is not listed in the above FAQ, contact <http://www.reallusion.com/support.asp>