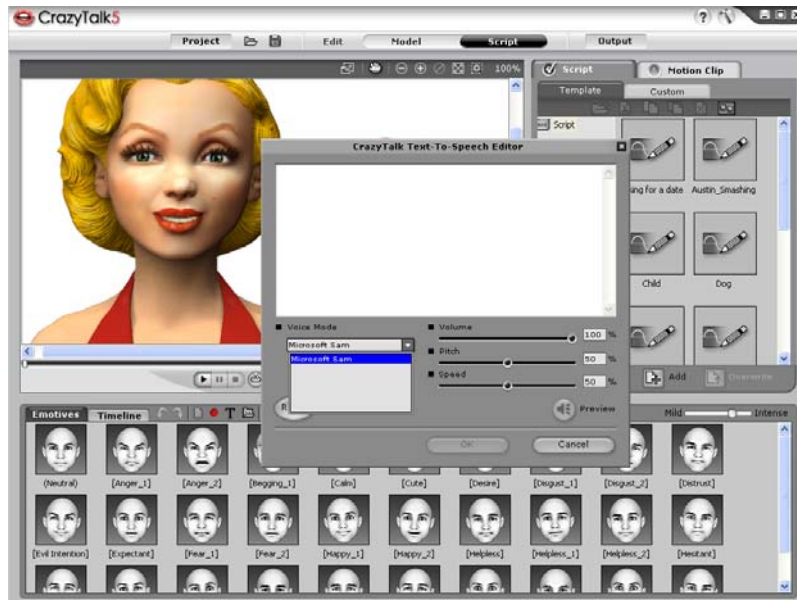


Text-To-Speech Tutorial

Default TTS Status

If there is no TTS engine installed on your system environment, the 'Text-to-Speech Interface' won't be presented. The user interface will immediately perform this task when you click 'Text-to-Speech button'.



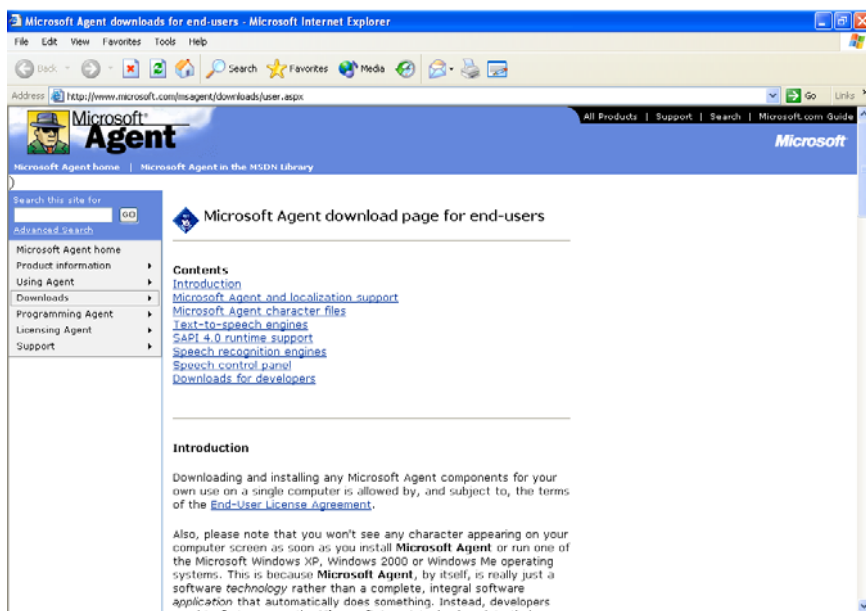
Step 1. Closing 'CrazyTalk'

Please close CrazyTalk before you want to install the TTS engines of other languages.

Step 2. Visit 'Microsoft Agent download page for end-users'

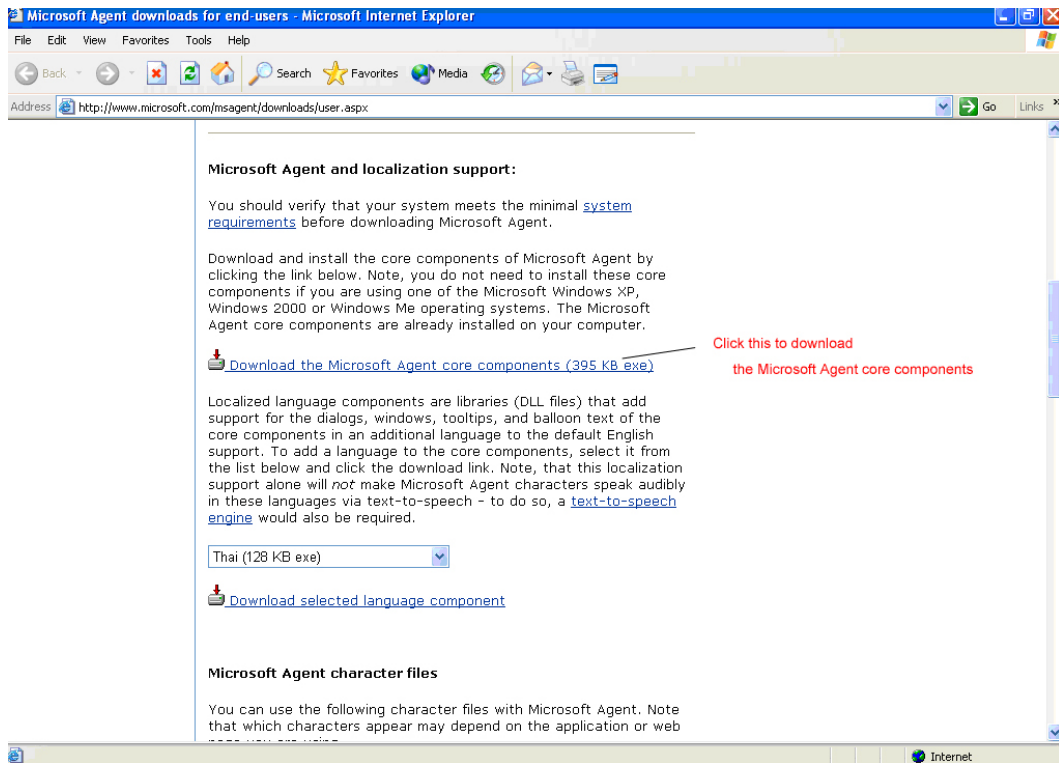
Microsoft provides more than 10 languages for SAPI4. Please visit 'Microsoft Agent download page for end-users'. The URL address is shown below.

<http://www.microsoft.com/msagent/downloads/user.aspx>



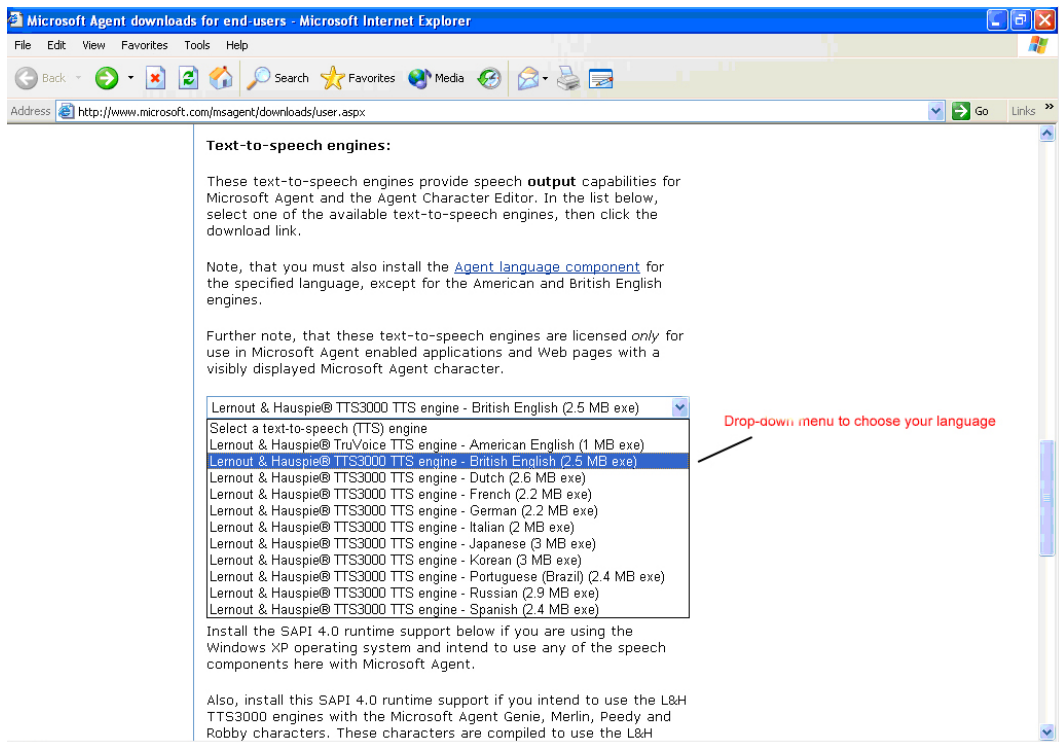
Step 3. Download the 'Microsoft Agent core components'

Please download the Microsoft Agent core components 2.0 via this link. However, you do not need to install these core components if you are using one of the Microsoft Windows XP, Windows 2000 or Windows Me operating systems. The Microsoft Agent core components are already installed on your computer.




Step 4. Download the 'Text-to-speech engines'

Please use the drop-down menu to choose the languages such as 'British English'.



Then, please click the 'download selected engine' to download this TTS engine.

Lernout & Hauspie® TTS3000 TTS engine - British English (2.5 MB exe) 

 [Download selected engine](#)

Step 5. Download the 'SAPI 4.0 runtime support'

Please click this link to download the 'SAPI 4.0 runtime support'.

SAPI 4.0 runtime support:

Install the SAPI 4.0 runtime support below if you are using the Windows XP operating system and intend to use any of the speech components here with Microsoft Agent.

Also, install this SAPI 4.0 runtime support if you intend to use the L&H TTS3000 engines with the Microsoft Agent Genie, Merlin, Peedy and Robby characters. These characters are compiled to use the L&H TruVoice engine as the default speech output engine and the SAPI 4.0a runtime is necessary to set these characters' TTSMoDeID property to use the TTS3000 engines. Other Microsoft Agent characters may also require this SAPI 4.0 runtime support to set their TTSMoDeID property.

 [Download the Microsoft SAPI 4.0a runtime binaries \(824 KB exe\)](#)

Click this link
to download

Step 6. Install these files

After the files downloaded, you have gotten 'MSAgent.exe', 'spchapi.exe' and a TTS engine file. Please install them. If you are using one of the Microsoft Windows XP, Windows 2000 or Windows Me operating systems, you do not need to install 'MSAgent.exe'.



lhttseng.exe
Win32 Cabinet Self-Extractor
Microsoft Corporation



MSagent.exe
Win32 Cabinet Self-Extractor
Microsoft Corporation



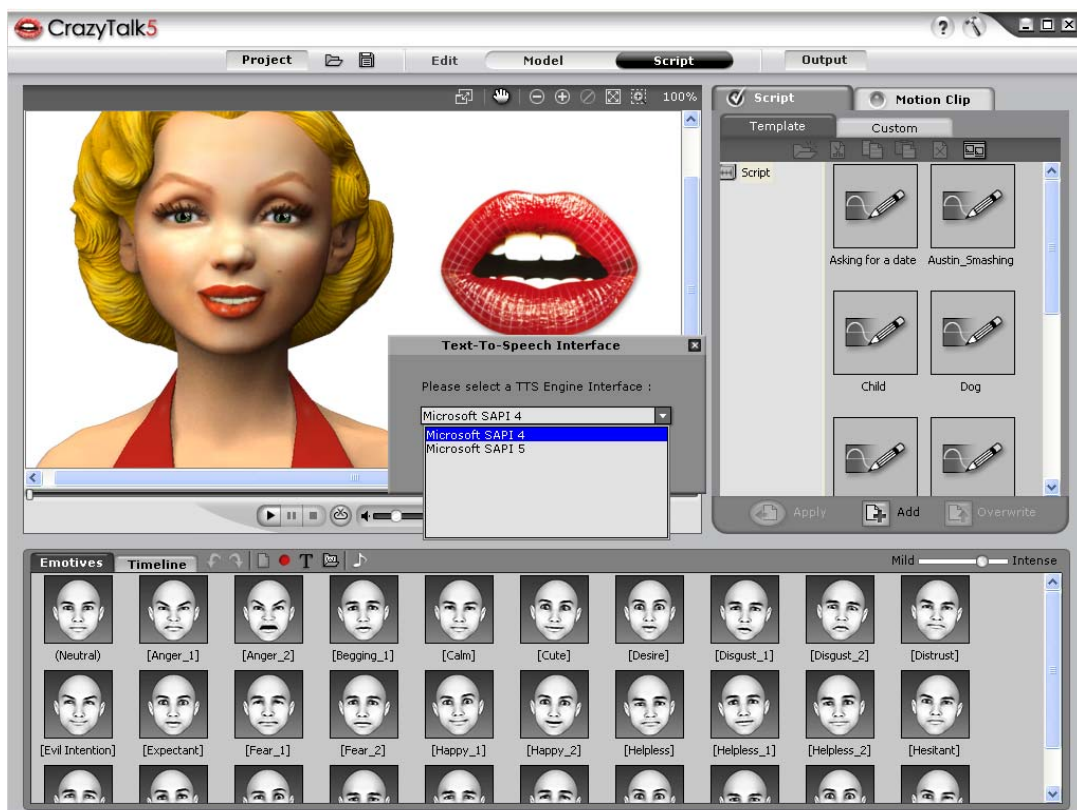
spchapi.exe
Win32 Cabinet Self-Extractor
Microsoft Corporation

Step 7. Launch 'CrazyTalk' again

Please launch 'CrazyTalk' again; then, click Script --> Text-to-Speech button.



After that, the 'Text-to-Speech Interface' will be displayed, and there are two TTS engines to be chosen, which are 'Microsoft SAPI 4' and 'Microsoft SAPI 5'. Please choose 'Microsoft SAPI 4', then click the 'OK' button.



Step 8. Choose the languages

Please choose the language which you want to be presented such as 'Adult Male #1 British English (LH)'.

